

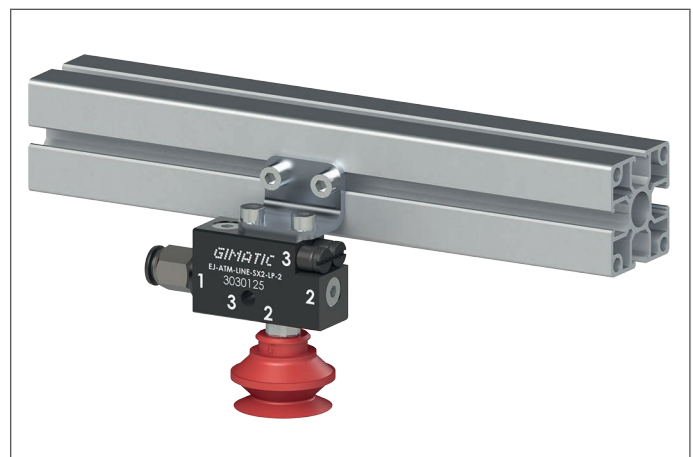
EJ-ATM-LINE-SMALLX2

- Restores the atmospheric pressure inside the gripping device to enable the quick release of the product
- Suitable for sealed applications to reduce cycle time
- Available with Gimatic's integrated vacuum switch, pre-set (-30, -50 and -70 kPa), in the PNP and NPN versions
- Vacuum ports, in-line or L-shaped
- A single 3/2 valve controls the vacuum pump and the ATM release device
- Anodised aluminium manifold
- Multiple G1/8" vacuum ports
- Available with two two-stage EJ-SMALL cartridges (EJ-LP, EJ-HV)

Typical applications

- Robotic cells for handling parts in transformation processes, for instance when serving bending machines, sheet metal forming presses and bending processes
- Glass handling machines
- Packaging machines, for the food and pharmaceutical sector

Application example



Technical features

Medium	Compressed air in compliance with ISO 8573-1:2010 [7:4:4]
Max feed pressure	0.7 MPa
Weight	66.5 ± 73.5 g
Material	PA, SS, Al, Nitrile (NBR)
Noise level	< 70 dB

Suction flow rate

Model	Feed pressure [MPa]	Air consumption [NI/s]	Suction flow rate [NI/s] at different vacuum levels [kPa]											Max vacuum [kPa]
			0	-10	-20	-30	-40	-50	-60	-70	-80	-90		
EJ-ATM-LINE-SX2-LP-2	0.22	0.34	0.5	0.36	0.16	0.1	0.08	0.05	0.036	0.0106	–	–	-82	
EJ-ATM-LINE-SX2-HV-2	0.5	0.26	0.44	0.32	0.20	0.12	0.10	0.08	0.04	0.02	0.02	–	-92	

For technical specifications regarding the suction flow rate and the air consumption at different pressures, refer to the technical data sheets of the two-stage EJ-SMALL-LP cartridges and multiply by two the values reported at the different vacuum levels

Evacuation time

Model	Feed pressure [MPa]	Air consumption [NI/s]	Evacuation time [s/l] to reach different vacuum levels [kPa]										Max vacuum [kPa]
			-10	-20	-30	-40	-50	-60	-70	-80	-90		
EJ-ATM-LINE-SX2-LP-2	0.22	0.34	0.23	0.61	1.38	2.5	4.03	6.35	10.65	29.5	–	-82	
EJ-ATM-LINE-SX2-HV-2	0.5	0.26	0.26	0.65	1.27	2.2	3.3	4.95	8.3	18.3	–	-92	

For technical specifications regarding the evacuation time and the consumption at different pressures refer to the technical data sheets of the EJ-SMALL-LP cartridges and divide by two the reported values

Identification codes		
Alphanumeric code	Description	Order code
EJ-ATM-LINE-SX2-LP-2	EJ-ATM-LINE-SMALLX2-LP-2 vacuum pump with holder	3030125
EJ-ATM-LINE-SX2-HV-2	NEW EJ-ATM-LINE-SMALLX2-HV-2 vacuum pump with holder	3030205
EJ-ATM-LINE-SX2-LP-2-VSW-30-P	EJ-ATM-LINE-SMALLX2-LP-2 vacuum pump with holder, pre-set vacuum switch PNP -30 kPa	3030126
EJ-ATM-LINE-SX2-LP-2-VSW-50-P	EJ-ATM-LINE-SMALLX2-LP-2 vacuum pump with holder, pre-set vacuum switch PNP -50 kPa	3030127
EJ-ATM-LINE-SX2-LP-2-VSW-70-P	EJ-ATM-LINE-SMALLX2-LP-2 vacuum pump with holder, pre-set vacuum switch PNP -70 kPa	3030128
EJ-ATM-LINE-SX2-LP-2-VSW-30-N	EJ-ATM-LINE-SMALLX2-LP-2 vacuum pump with holder, pre-set vacuum switch NPN -30 kPa	3030129
EJ-ATM-LINE-SX2-LP-2-VSW-50-N	EJ-ATM-LINE-SMALLX2-LP-2 vacuum pump with holder, pre-set vacuum switch NPN -50 kPa	3030130
EJ-ATM-LINE-SX2-LP-2-VSW-70-N	EJ-ATM-LINE-SMALLX2-LP-2 vacuum pump with holder, pre-set vacuum switch NPN -70 kPa	3030131
CFGM800325P	Axial female connector with M8 lock nut, 3 pins, round PUR cable, length 2.5 metres	3030148

For more information and technical data on the pre-set vacuum switches described, please see the accessories section on page 654

