

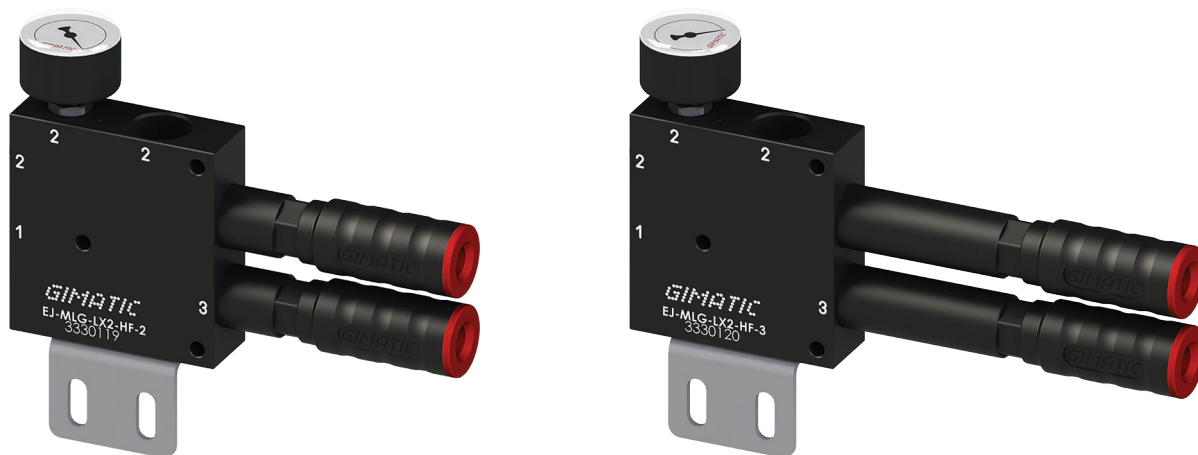
## EJ-MLG-LARGE

- Ideal for centralized applications
- Low weight, POM body
- G3/4" vacuum port
- Integrated silencer
- Low noise and short cycle time
- Multiple vacuum connections
- Short evacuation time
- Prearranged with VACSW-3N203-G (PNP) and VACSW-3M203-G (NPN) vacuum switches
- Available with two- and three-stage EJ-LARGE cartridge (EJ-HF and EJ-HV)

### Typical applications

- Graphic sector, offset machines, pre- and post-press
- Liquid filling and emptying applications
- Handling of objects with high weights or uneven surfaces

**NEW**



### Technical features

Medium	Compressed air in compliance with ISO 8573-1:2010 [7:4:4]
Max feed pressure	0.7 MPa
Weight	480 ÷ 510 g
Material	PA, SS, POM, Nitrile (NBR)
Noise level	70 ÷ 75 dB

### Suction flow rate

Model	Feed pressure [MPa]	Air consumption [l/s]	Suction flow rate [l/s] at different vacuum levels [kPa]										Max vacuum [kPa]
			0	-10	-20	-30	-40	-50	-60	-70	-80	-90	
EJ-MLG-LX2-HF-2	0.6	3.4	6.2	6.0	5.0	3.4	1.78	1.24	1.02	0.62	–	–	-73
EJ-MLG-LX2-HF-3	0.6	3.4	11.8	7.0	5.0	3.4	1.78	1.24	1.02	0.62	–	–	-73
EJ-MLG-LX2-HV-2	0.5	3.86	5.2	4.8	3.4	2.6	1.4	1.1	0.8	0.62	0.3	0.04	-94
EJ-MLG-LX2-HV-3	0.5	3.86	12.0	7.4	4.2	3.8	1.58	1.1	0.8	0.62	0.3	0.04	-94

For technical specifications, regarding the suction flow rate and the air consumption at different pressures, please refer to the technical data sheets of the EJ-LARGE cartridges in the two- and three-stage versions

### Evacuation time

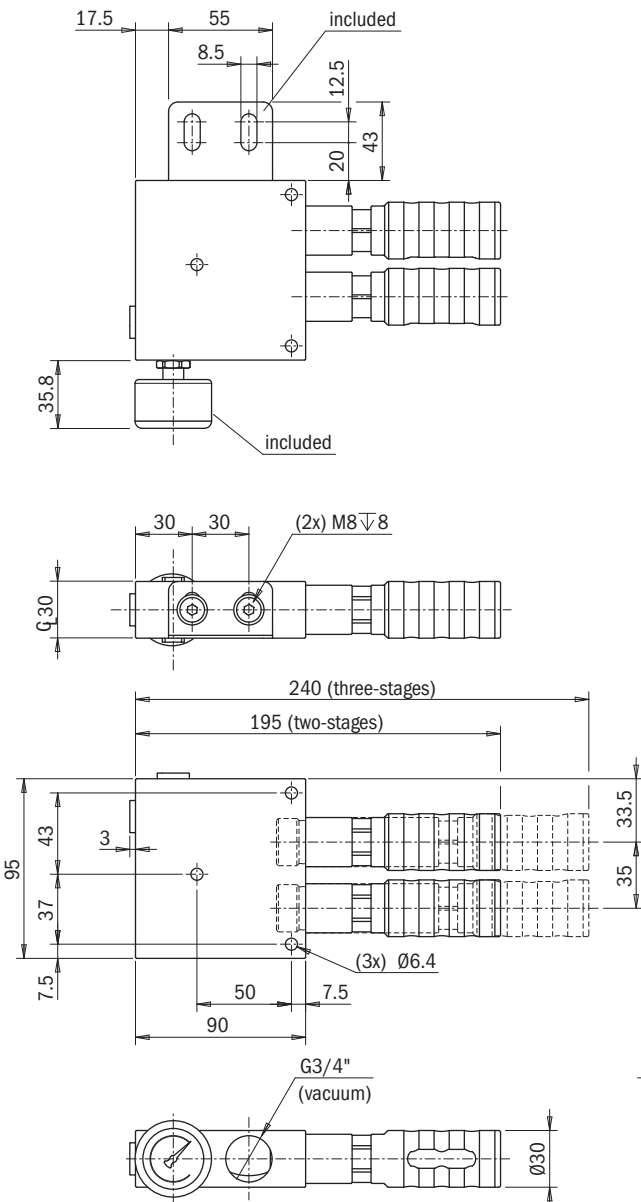
Model	Feed pressure [MPa]	Air consumption [NI/s]	Evacuation time [s/l] to reach different vacuum levels [kPa]									Max vacuum [kPa]
			-10	-20	-30	-40	-50	-60	-70	-80	-90	
EJ-MLG-LX2-HF-2	0.6	3.4	0.015	0.035	0.06	0.095	0.15	0.2	0.35	—	—	-73
EJ-MLG-LX2-HF-3	0.6	3.4	0.01	0.025	0.05	0.095	0.15	0.2	0.35	—	—	-73
EJ-MLG-LX2-HV-2	0.5	3.86	0.02	0.045	0.08	0.15	0.20	0.3	0.45	0.65	1.25	-94
EJ-MLG-LX2-HV-3	0.5	3.86	0.01	0.03	0.05	0.10	0.15	0.2	0.35	0.55	1.2	-94

For technical specifications regarding the evacuation time and the consumption at different pressures, please refer to the technical data sheets of the EJ-LARGE cartridges, in the two- and three-stage versions

### Identification codes

Alphanumeric code	Description	Order code
EJ-MLG-LX2-HF-2	EJ-MLG-LARGE <sup>2</sup> -HF-2 vacuum pump with holder and integrated silencer	3330119
EJ-MLG-LX2-HF-3	EJ-MLG-LARGE <sup>2</sup> -HF-3 vacuum pump with holder and integrated silencer	3330120
EJ-MLG-LX2-HV-2	EJ-MLG-LARGE <sup>2</sup> -HV-2 vacuum pump with holder and integrated silencer	3330121
EJ-MLG-LX2-HV-3	EJ-MLG-LARGE <sup>2</sup> -HV-3 vacuum pump with holder and integrated silencer	3330122

For information on the VACSW-3N203-G (PNP) and VACSW-3M203-G (NPN) vacuum switches, see page 654



Application example

