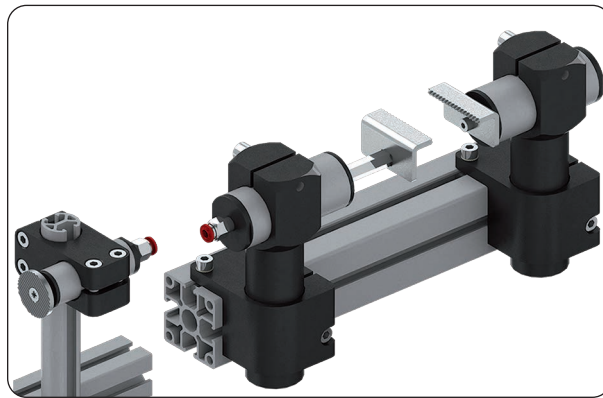
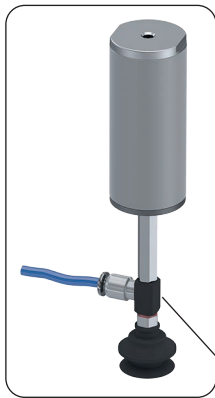
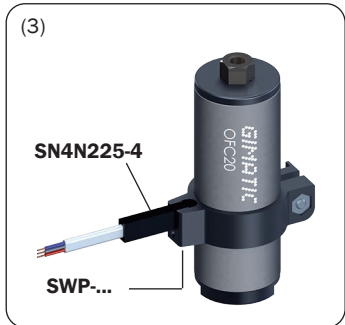
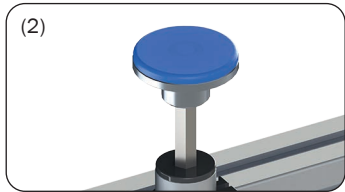
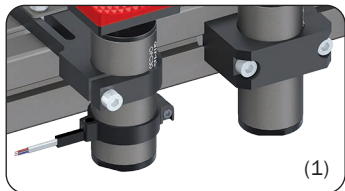


Mini cilindri universali a semplice effetto, antirotazione

- Alesaggio: 10mm, 16mm, 25mm.
- Corsa: 10mm, 20mm, 30mm.
- Vari accessori MFI... per il fissaggio a cravatta sul diametro esterno (1).
- Vari accessori da montare sullo stelo (2).
- Sensori e fascette opzionali (3).
- Grasso alimentare FDA-H1.

General purpose, single-acting, anti-rotation mini cylinders

- Piston bore: 10mm, 16mm, 25mm.
- Stroke: 10mm, 20mm, 30mm.
- Several accessories MFI... for the clamp mounting on the external diameter (1).
- Several accessories to be mounted on the rod (2).
- Optional sensors and clamps (3).
- Food grade grease FDA-H1.

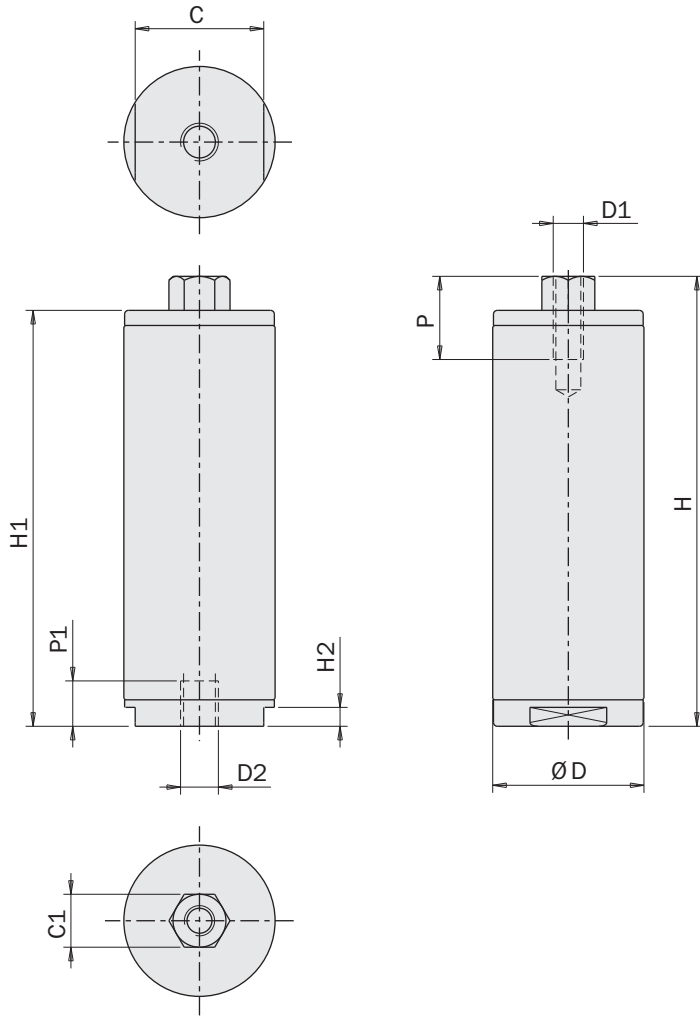


	MFI-A361	MFI-A362	MFI-A364	MFI-A365
A	M5	G1/8	M4	M3
B	M5	G1/8	M5	M5



	OFC14-10	OFC20-20	OFC30-30
Fluido Medium	Aria compressa a norma ISO 8573-1:2010 [7:4:4] Compressed air in compliance with ISO 8573-1:2010 [7:4:4]		
Pressione di esercizio Pressure range	2 ÷ 8 bar		
Temperatura di esercizio Temperature range	5° ÷ 60 °C.		
Corsa Stroke	10 mm	20 mm	30 mm
Alesaggio Piston bore	Ø10 mm	Ø16 mm	Ø25 mm
Forza di chiusura a 0 bar Closing force at 0 bar	4 N	8 N	23 N
Forza di apertura a 6 bar Opening force at 6 bar	43 N	113 N	271 N
Consumo d'aria per ciclo Cycle air consumption	1 cm ³	4 cm ³	15 cm ³
Peso Weight	20 g	40 g	85 g

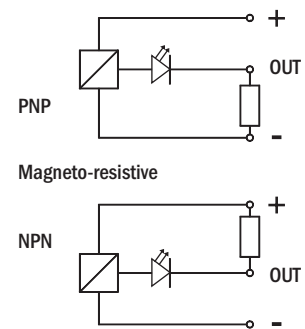
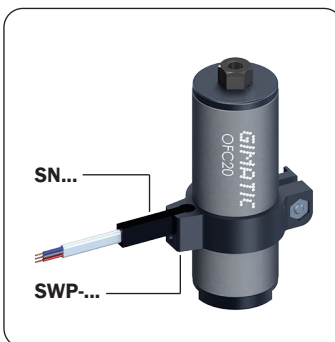
Dimensioni (mm)
Dimensions (mm)



	OFC14-10	OFC20-20	OFC30-30
C	12	17	27
C1	5.5	7	7
D	Ø14	Ø20	Ø30
D1	M3	M4	M4
D2	M5	M5	M5
H	50	59.5	75
H1	45.5	55	70.5
H2	2.5	2.5	2.5
P	7	9	9
P1	6	6	6

FIRST ANGLE PROJECTION

OFC	SWP...
OFC14-10	SWP-014
OFC20-20	SWP-020
OFC30-30	SWP-030



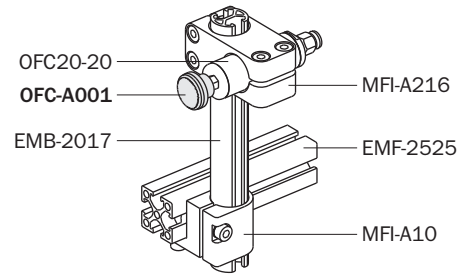
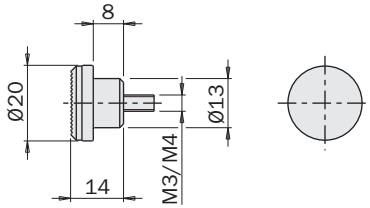
SN...		
SN4N225-G	PNP	Cavo 2.5m 2.5m cable
SN4M225-G	NPN	
SN3N203-G	PNP	Connettore M8 Snap M8 plug connector
SN3M203-G	NPN	

Kit opzionali Optional kits

	OFC-A001	OFC-A002	OFC-A003	OFC-A004	OFC-A005	OFC-A006	OFC-A007	OFC-A008
OFC14-10	☑	☑	☑	☐	☑	☑	☐	☑
OFC20-20	☑	☑	☑	☑	☑	☐	☑	☐
OFC30-30	☑	☑	☑	☑	☑	☐	☑	☐
Peso Weight	15 g	25 g	15 g	25 g	35 g	19 g	11 g	50 g

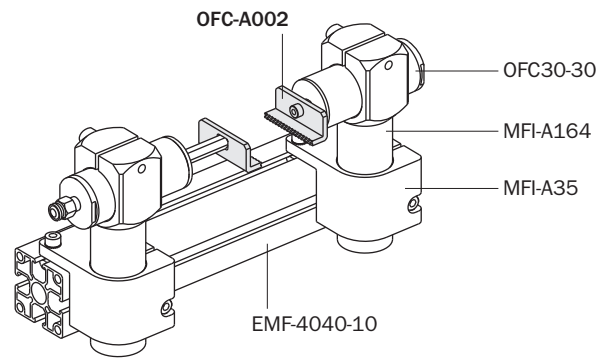
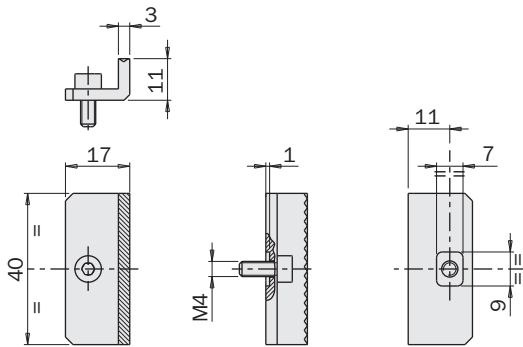
OFC-A001

Bottone con gommino in HNBR
Button with HNBR rubber pad



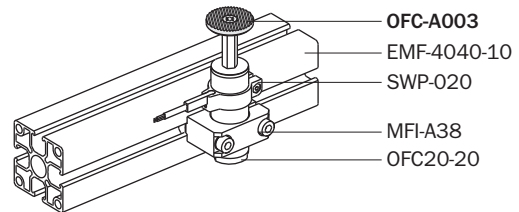
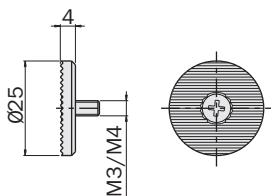
OFC-A002

Artiglio in acciaio
Steel claw



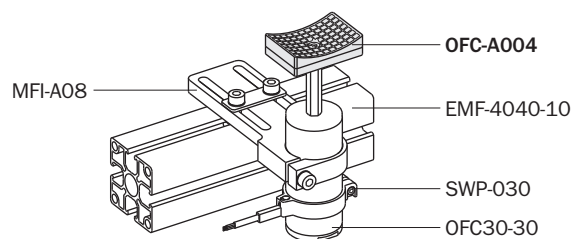
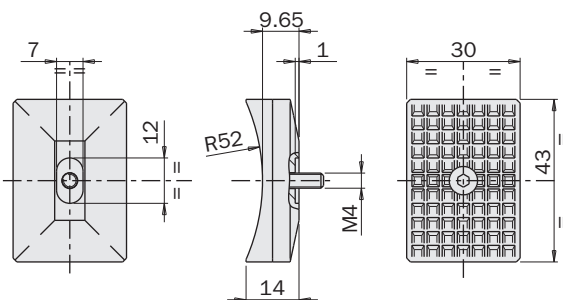
OFC-A003

Bottone in acciaio
Steel button



OFC-A004

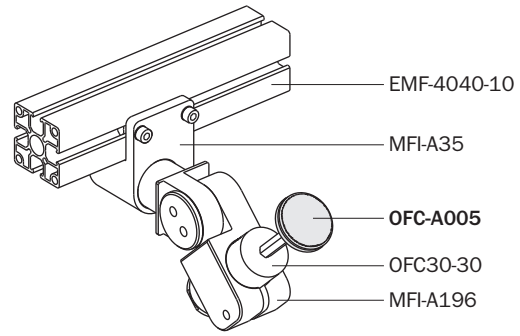
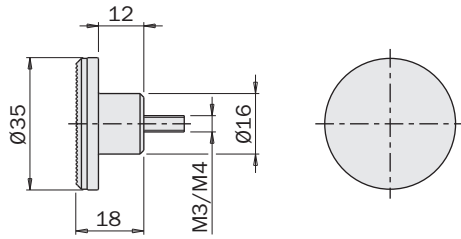
Spintore concavo con gommino in TPU
Concave pusher with TPU rubber pad



Kit opzionali
Optional kits

OFC-A005

Bottone con gommino in HNBR
Button with HNBR rubber pad



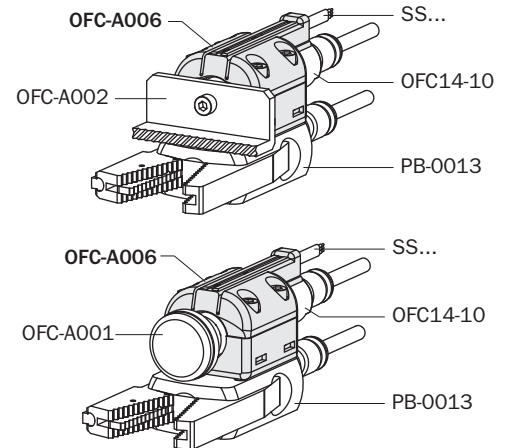
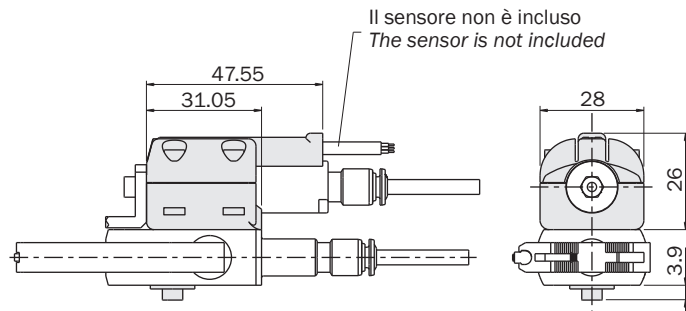
OFC-A006

Staffa per il fissaggio di OFC14-10 sulle pinze PB

- Utile per espellere la materozza quando si incastra sulle dita della pinza.
- Layout compatto di tubi e cavi.
- Sensore magnetico SS opzionale.
- Materiale PA12GB.

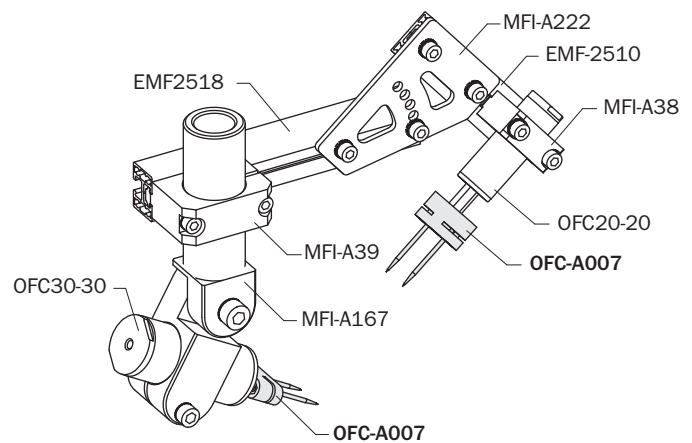
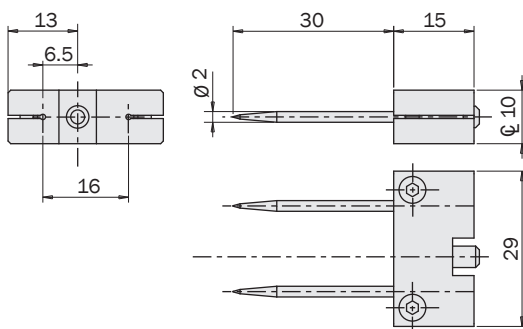
Bracket for mounting cylinder OFC14-10 on PB grippers

- Useful to extract the sprue when it is stuck on the gripper fingers.
- Compact layout of hoses and cables.
- Optional SS magnetic sensor.
- Material PA12GB.



OFC-A007

Porta aghi
Needle holder



Kit opzionali
Optional kits

OFC-A008

Staffa per il fissaggio di OFC14-10 sulle pinze DD

- Utile per espellere la materozza quando si incastra sulle dita della pinza.
- Layout compatto di tubi e cavi.
- Sensore magnetico SS opzionale.
- Materiale PA12GB.

Bracket for mounting cylinder OFC14-10 on DD grippers

- Useful to extract the sprue when it is stuck on the gripper fingers.
- Compact layout of hoses and cables.
- Optional SS magnetic sensor.
- Material PA12GB.

