

Pinze pneumatiche mono-dito angolari per staffaggio, serie OFFP

- Azionamento a semplice effetto.
- Contatto morbido con pastiglie in HNBR, con dita personalizzate, oppure con O-Ring in NBR, Silicone, Viton.
- Vari accessori per il fissaggio.
- Sensori magnetici e relative staffe in opzione.
- Grasso alimentare NSF-H1.

One finger angular pneumatic grippers for clamping, series OFFP

- Single acting.
- Soft contact by means of HNBR pads, custom fingers, or NBR, Silicone or Viton O-rings.
- Several mounting accessories.
- Magnetic sensors and relevant mounting brackets as option.
- Food grade grease NSF-H1.

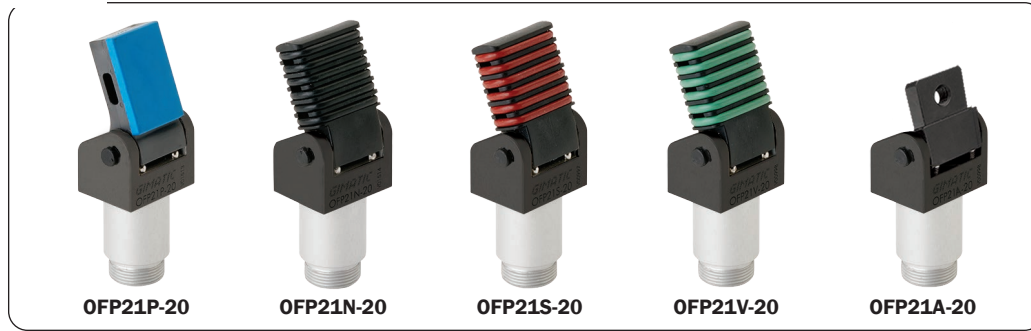
OFFP20



OFFP14



OFFP21



	OFFP20A-20	OFFP21A-20	OFFP14A-25
HNBR	OFFP20P-20	OFFP21P-20	OFFP14P-25
NBR	OFFP20N-20	OFFP21N-20	
Silicone Silicone	OFFP20S-20	OFFP21S-20	
Viton	OFFP20V-20	OFFP21V-20	
Fluido Medium	Aria compressa a norma ISO 8573-1:2010 [7:4:4] Compressed air in compliance with ISO 8573-1:2010 [7:4:4]		
Pressione di esercizio Pressure range	2 ÷ 8 bar		
Temperatura di esercizio Temperature range	5° ÷ 60 °C.		
Corsa Stroke	22°	22°	25°
Alesaggio Piston bore	16 mm	16 mm	12 mm
Coppia di chiusura a 6 bar Closing torque at 6 bar	100 Ncm	100 Ncm	40 Ncm
Consumo d'aria per ciclo Cycle air consumption	1 cm ³	1 cm ³	0.4 cm ³
Peso Weight	40 g	33 g	13 g
Frequenza max funzionamento continuativo Maximum working frequency	2 Hz		
Tempo di chiusura senza carico Closing time without load	0.02 sec		

Unità Rotanti
Rotary Units

Cambia Utensile
Quick Changer

Profili e Staffe
Profiles and Brackets

Pinze
Grippers

Attuatori Lineari
Linear Actuators

Sospensioni
Suspensions

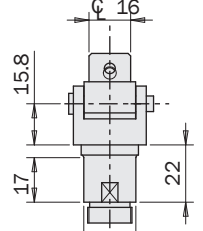
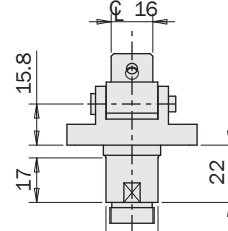
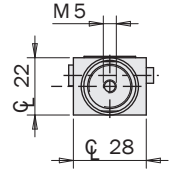
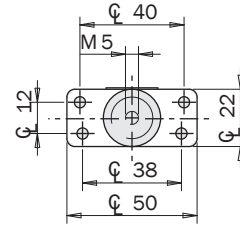
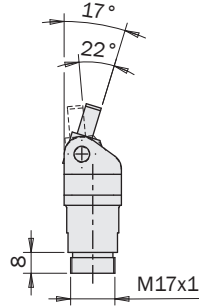
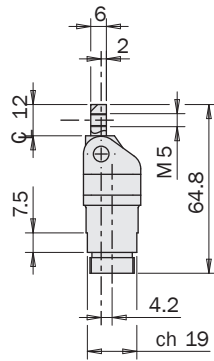
Taglierini
Nippers

Kit-Robot
Robot Kit

Accessori Opzionali
Options

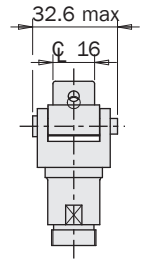
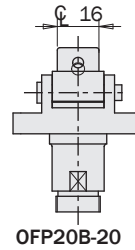
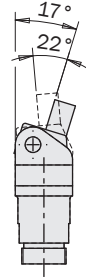
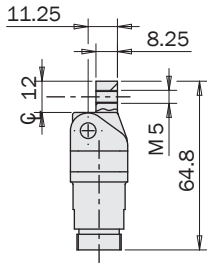
Sensori
Sensors

Dimensioni (mm)
Dimensions (mm)



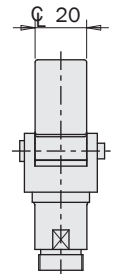
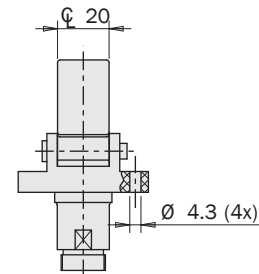
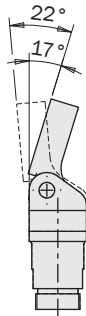
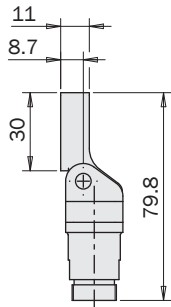
OFP20A-20

OFP21A-20



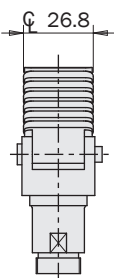
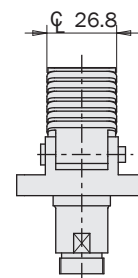
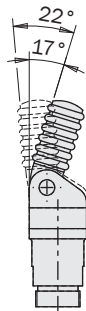
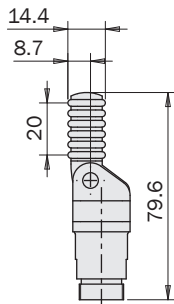
OFP20B-20

OFP21B-20



OFP20P-20

OFP21P-20

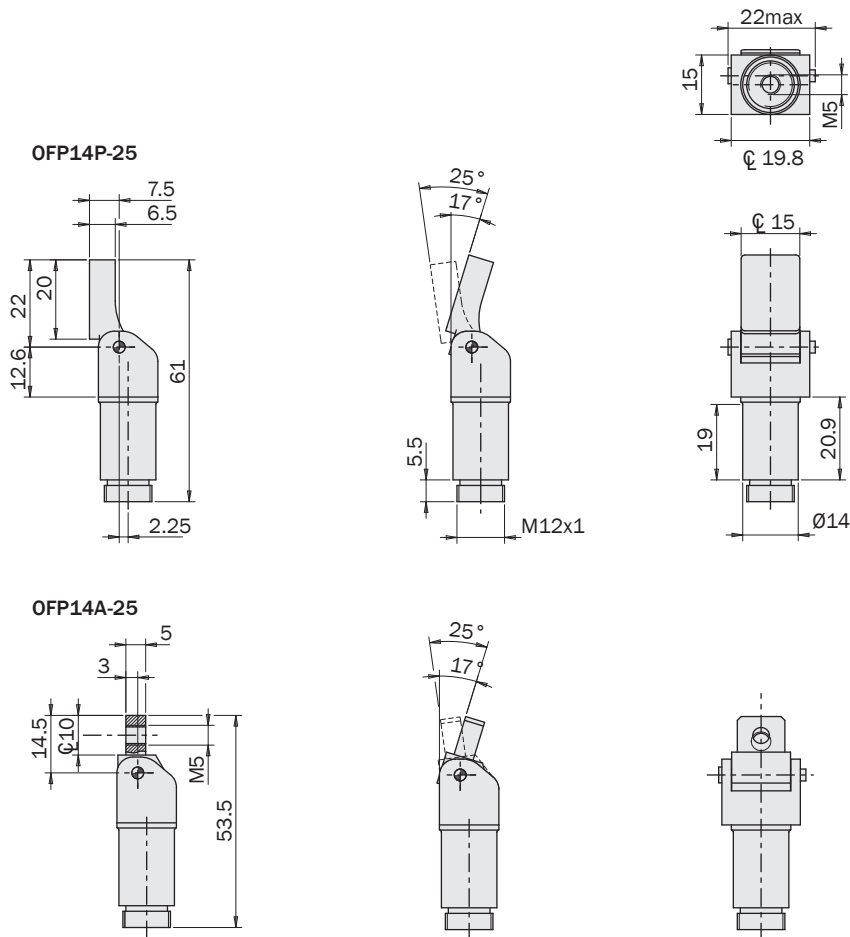


OFP20N-20
OFP20S-20

OFP21N-20
OFP21S-20



Dimensioni (mm) Dimensions (mm)

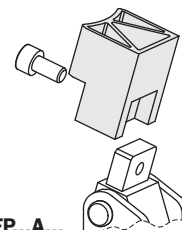


O-Ring di ricambio Spare O-Ring



	KIT3-OFP20N	KIT3-OFP20S	KIT3-OFP20V
Materiale Material	NBR	Silicone Silicone	Viton
Pinza Gripper	OFP20N-20 OFP21N-20	OFP20S-20 OFP21S-20	OFP20V-20 OFP21V-20
Temperatura di esercizio Temperature range	5° ÷ 100 °C.	5° ÷ 200 °C.	5° ÷ 200 °C.

Custom service HP



Pastiglia di ricambio Spare pad

	OFR20-95-56	OFR30-95-42
Materiale Material	HNBR	HNBR
Pinza Gripper	OFP14P-25	OFP20P-20 OFP21P-20
Temperatura di esercizio Temperature range	5° ÷ 150 °C.	5° ÷ 150 °C.

OFF...A...

Si può usare il Servizio Stampa 3D di Gimatic per ordinare dita di presa personalizzate.

Custom fingers can be ordered from Gimatic's 3D Printing Service.

Fissaggio

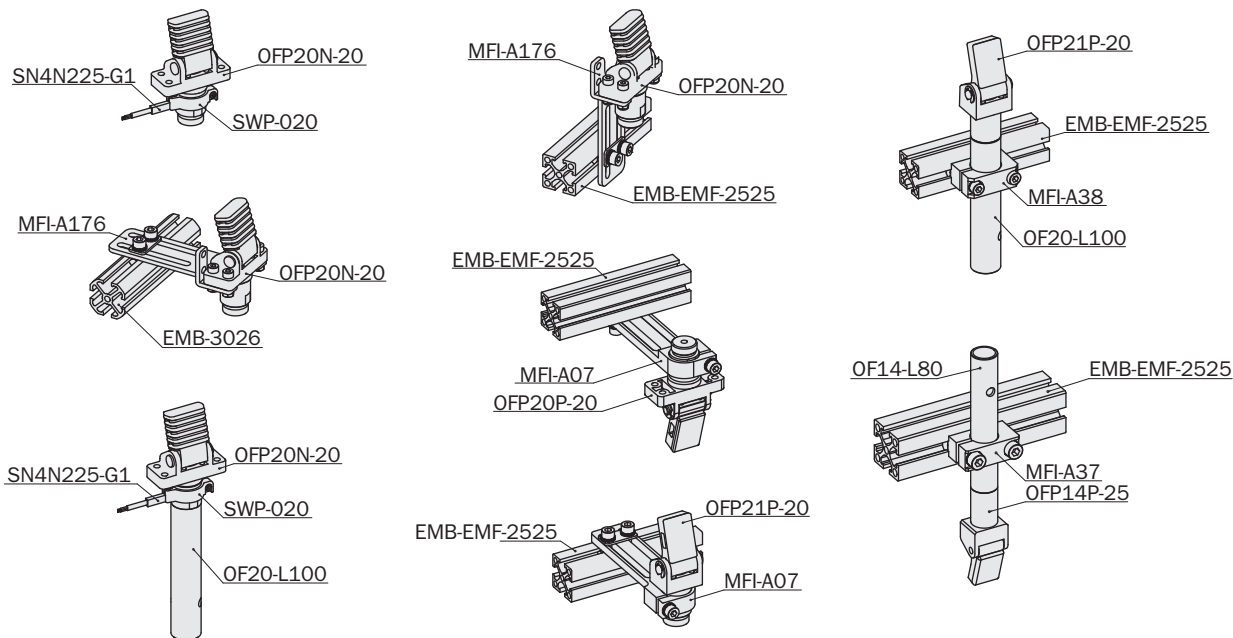
Le pinze OFF hanno il corpo in alluminio e possono essere incravattate con tutti gli accessori MFI con diametro di 14mm e 20mm.

MFI-A176 può essere usato con OFF20.

Fastening

The OFF grippers have an aluminum body and can be clamped with all MFI accessories with 14mm and 20mm diameter.

MFI-A176 can be used with OFF20.

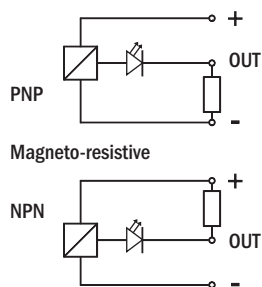


Sensori

Il rilevamento della posizione di lavoro è affidato a uno o più sensori magnetici di prossimità (opzionali), che rilevano la posizione attraverso il magnete sul pistone. Quindi, per un corretto funzionamento, è da evitare l'impiego in presenza di forti campi magnetici od in prossimità di grosse masse di materiale ferromagnetico.

I sensori utilizzabili sono:

Model	Type	Description
SN4N225-G	PNP	Cavo 2.5m
SN4M225-G	NPN	2.5m cable
SN3N203-G	PNP	Connettore M8
SN3M203-G	NPN	Snap M8 plug connector



Sensors

The operating position is detected by magnetic proximity sensors (optional) through a magnet placed on the piston. The use of magnetic proximity sensors is to be avoided in the vicinity of large masses of ferromagnetic material or intense magnetic fields as this may cause detection problems.

The sensors that can be used are:

