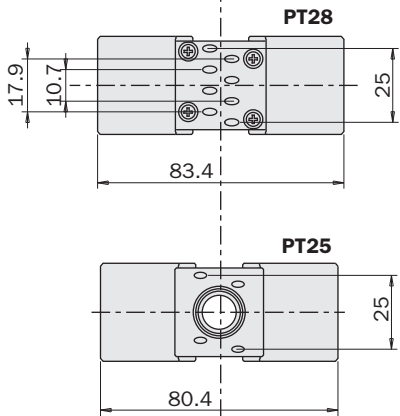
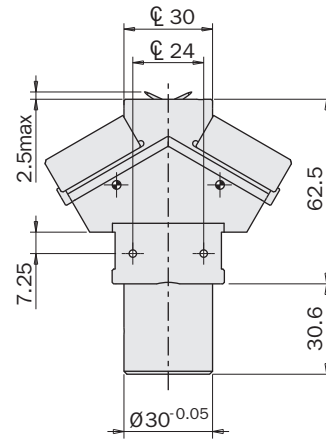
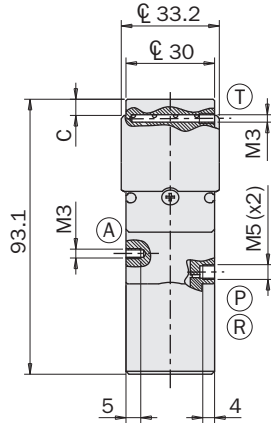
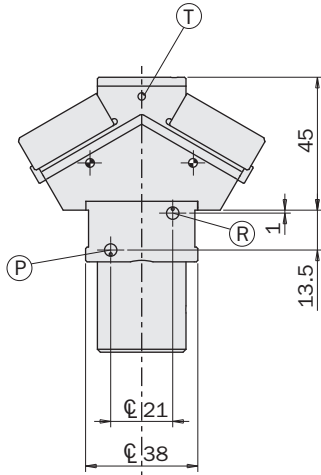


Pinza ad aghi pneumatica autocentrante serie PT

- 4 aghi (PT25) o 8 aghi (PT28) diametro 2mm.
- Adatta per l'industria plastica, tessile e alimentare.
- Azionamento a doppio effetto.
- Regolazione simultanea della corsa degli aghi (1).
- Vari accessori disponibili per il fissaggio (2).
- PT25: Ampio foro passante (3).
- PT28: Canale di soffiaggio (T) per pulizia e rilascio.
- PT28: Pastiglia in PTFE (4) per contatto con superfici calde.
- PT28: Sensori magnetici opzionali (5).

Self-centering pneumatic needle gripper series PT

- 4 needles (PT25) or 8 needles (PT28) with 2mm diameter.
- Suitable for plastics, textile and food industry.
- Double acting.
- Needle simultaneous stroke adjustment (1).
- Several mounting accessories (2).
- PT25: Large through hole (3).
- PT28: Blow-off port (T) for cleaning and releasing.
- PT28: Pad in PTFE (4) for hot surface contact.
- PT28: Optional magnetic sensors (5).



(A) Foro per fissaggio
Hole for fastening

(T) Soffiaggio
Air connection

(P) Aghi dentro
Needles in

(R) Aghi fuori
Needles out



	PT25	PT28
Fluido Medium	Aria compressa a norma ISO 8573-1:2010 [7:4:4] Compressed air in compliance with ISO 8573-1:2010 [7:4:4]	
Pressione di esercizio Pressure range	3 ÷ 8 bar	
Temperatura di esercizio Temperature range	5° ÷ 60 °C.	
Forza di serraggio totale in apertura a 6 bar Opening total gripping force at 6 bar	90 N	
Corsa degli aghi Needle stroke	1 ÷ 7 mm	
Consumo d'aria per ciclo Cycle air consumption	3.5 cm ³	
Peso Weight	165 g	182 g

Unità Rotanti
Rotary Units

Cambia Utensile
Quick Changer

Profili e Staffe
Profiles and Brackets

Pinze
Grippers

Attuatori Lineari
Linear Actuators

Sospensioni
Suspensions

Taglierini
Nippers

Kit-Robot
Robot Kit

Accessori Opzionali
Options

Sensori
Sensors

Regolazione della corsa

La pinza è autocentrante.

Quindi il fine corsa del pistone determina la corsa di tutti gli aghi.

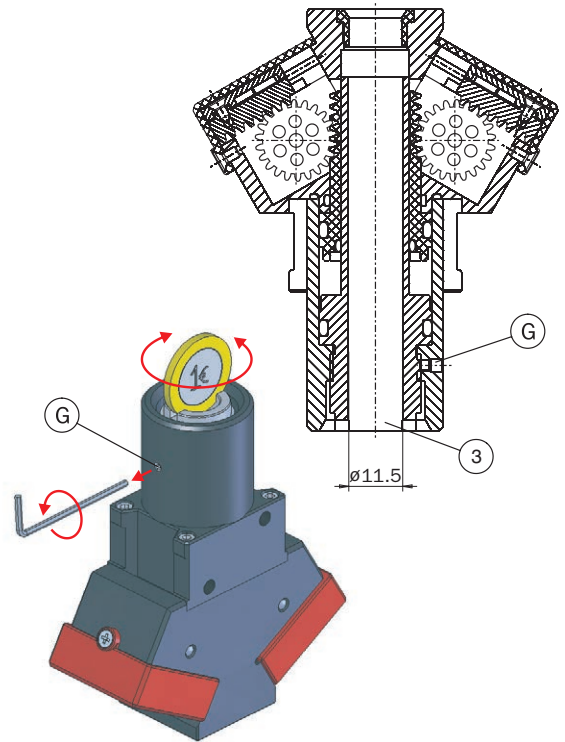
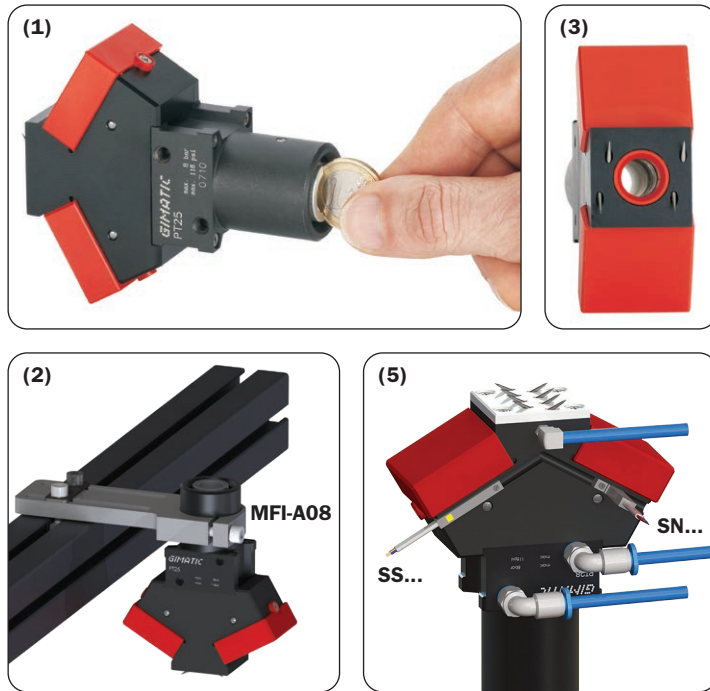
Questa si può regolare con una moneta da 1 euro, dopo aver allentato il grano di fermo (G).

Stroke adjustment

The gripper is self-centering.

Therefore the piston end-stroke determines the stroke of all needles.

It is possible to adjust this stroke, by a 1-euro coin, after the grub screw (G) has been loosened.



Manutenzione

Quando necessario, gli aghi possono essere facilmente rimpiazzati.

Il codice di ordinazione di un ago é PT-25-13.

Dopo cinque milioni di cicli la pinza deve essere re-ingrassata.

Grasso suggerito: BERULUB FG-H 2 SL

(Lubrificante NSF H1 Registrazione No. 135919).

Maintenance

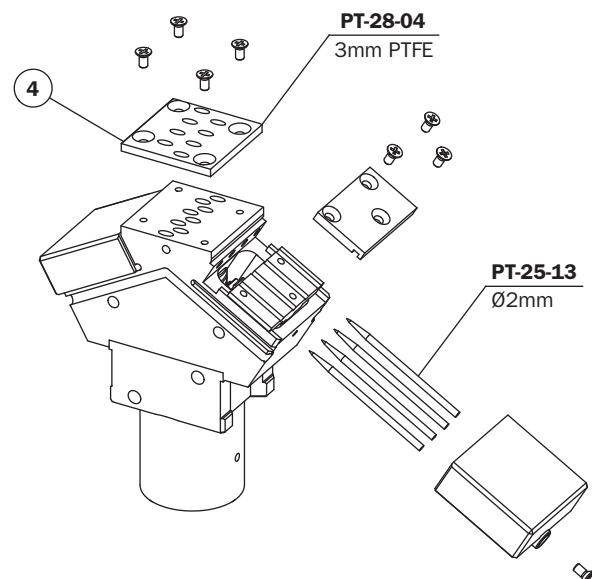
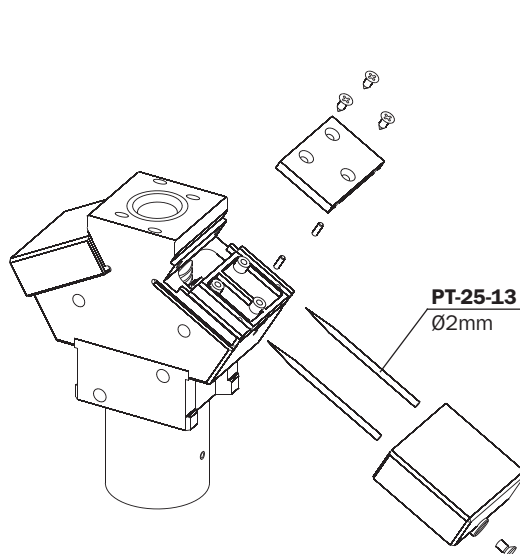
The needles can be easily replaced, when necessary.

The ordering code of one needle is PT-25-13.

After five million cycles re-lubricate the gripper.

Suggested grease: BERULUB FG-H 2 SL

(Lubricant NSF H1 Registration No. 135919).

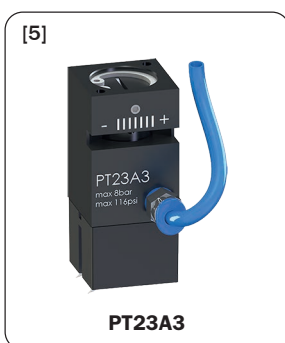
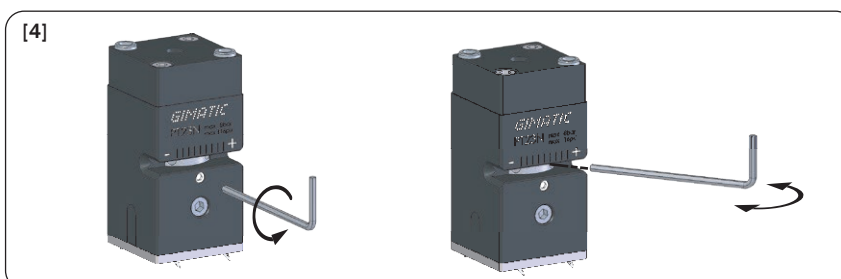
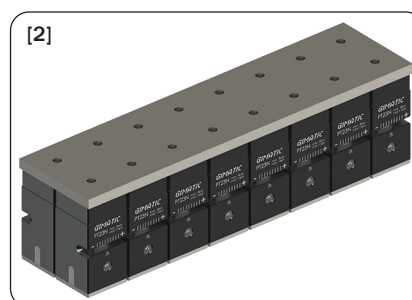
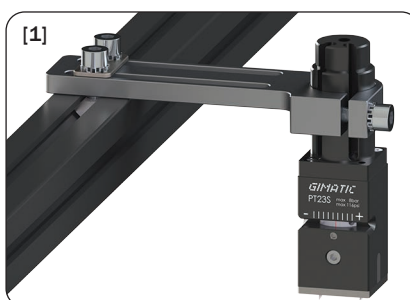


Minipinza ad aghi pneumatica autocentrante serie PT

- 4 aghi diametro 1.5mm.
- Adatta per l'industria plastica, tessile e alimentare.
- Azionamento a semplice effetto (normale chiusa).
- Regolazione simultanea della corsa degli aghi [4].
- PT23S e PT30S: fissaggio a cravatta [1].
- PT23A3, PT23N e PT30N: fissaggio su piastra [2].
- Sensori magnetici opzionali per PT23S e PT30S [3].
- PT23A3 con alimentazione laterale [5].

Self-centering pneumatic needle mini-gripper series PT

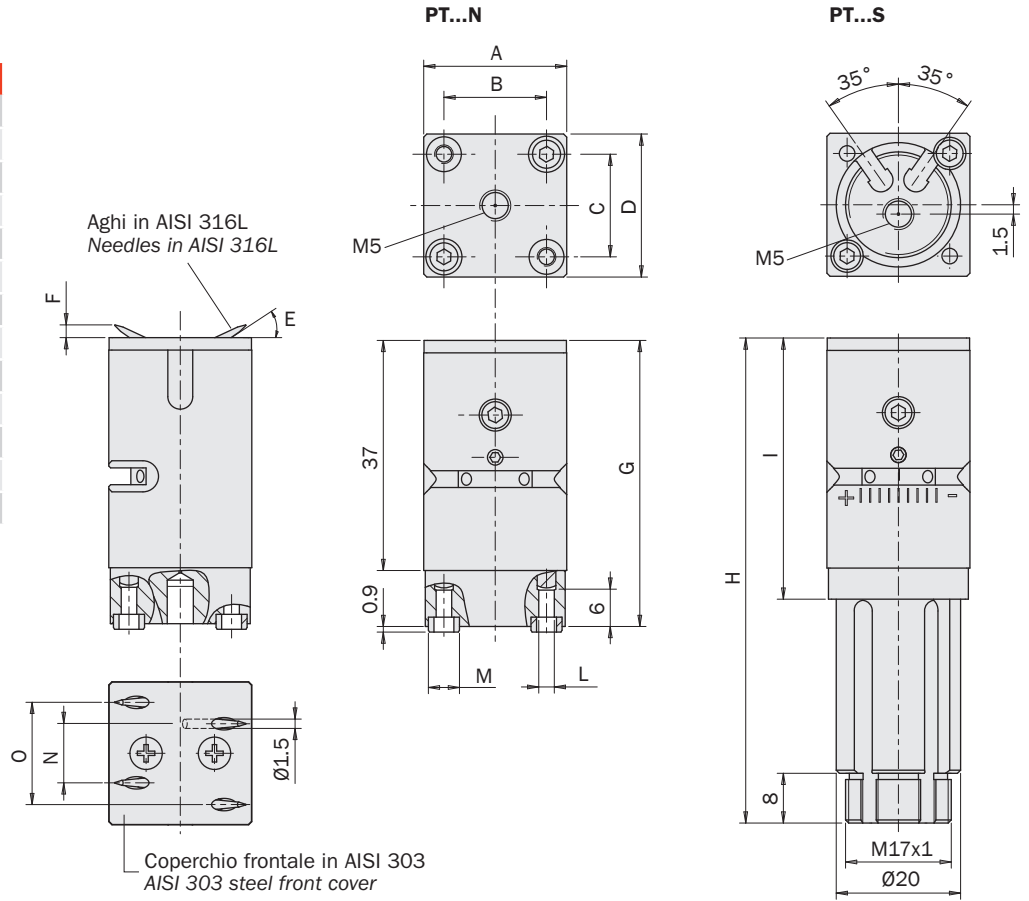
- 4 needles with diameter 1.5mm.
- Suitable for plastics, textile and food industry.
- Single acting (normally closed).
- Needle simultaneous stroke adjustment[4].
- PT23S and PT30S: clamp mounting [1].
- PT23A3 PT23N and PT30N: plate mounting [2].
- Optional magnetic sensors for PT23S and PT30S [3].
- PT23A3 with side air 2 part [5].



	PT23A3	PT23N	PT23S	PT30N	PT30S
Fluido Medium	Aria compressa a norma ISO 8573-1:2010 [7:4:4] Compressed air in compliance with ISO 8573-1:2010 [7:4:4]				
Pressione di esercizio Pressure range	3 ÷ 8 bar				
Temperatura di esercizio Temperature range	5° ÷ 60 °C.				
Forza di serraggio totale in apertura a 6 bar Opening total gripping force at 6 bar		40 N			50 N
Corsa degli aghi Needle stroke		0 ÷ 4 mm			0 ÷ 7 mm
Consumo d'aria per ciclo Cycle air consumption		0.6 cm ³			1.1 cm ³
Peso Weight	63 g	74 g	92 g	115 g	134 g

Dimensioni (mm)
Dimensions (mm)

	PT23...	PT30..
A	23	28
B	16.5	18
C	16.5	18
D	23	28
E	30°	35°
F	0÷2	0÷4
G	46.5	54
H	78.5	87.5
I	42.5	51.5
L	M3(x2)	M4(2x)
M	5 h8 (x2)	7 h8 (2x)
N	9.5	9
O	16.5	18



FIRST ANGLE PROJECTION

Dimensioni (mm)
Dimensions (mm)

	PT23A3
A	23
B	16.5
C	16.5
D	23
E	30°
F	1÷2
G	52
H	30
I	6.4
L	M3(x2)
M	-
N	8
O	15.6

