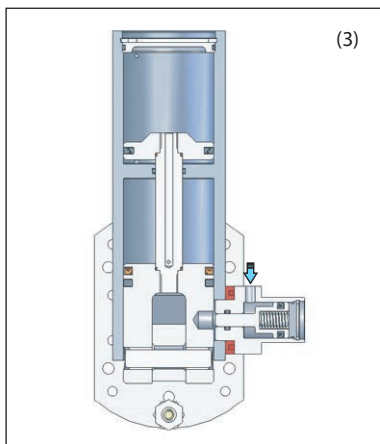
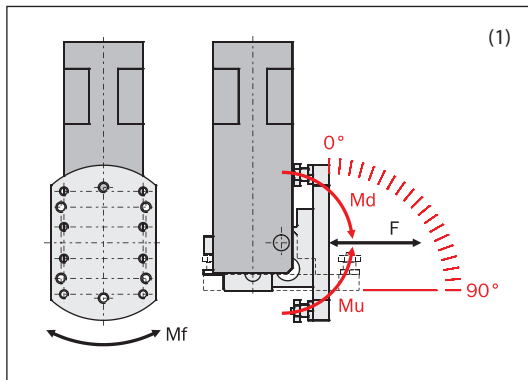
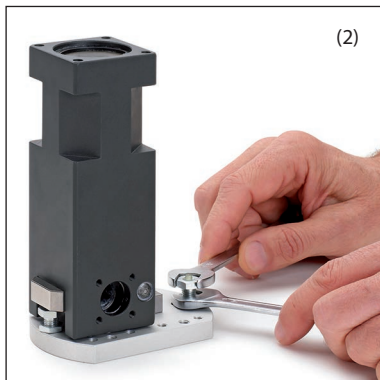


## Ribaltatori pneumatici per EOAT serie RBT

- Rotazione di 90° (1).
- Due fine corsa su gomma regolabili (2).
- Elevata coppia di sollevamento.
- Bloccaggio di sicurezza (3), eccetto RBT30.
- Sensori magnetici opzionali.

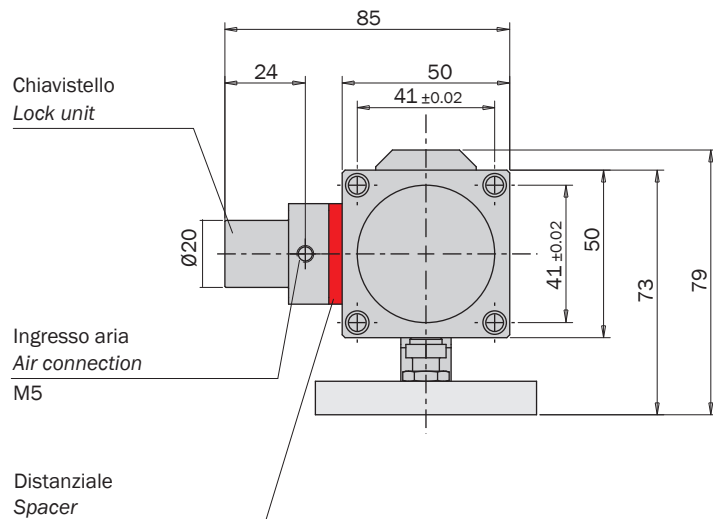
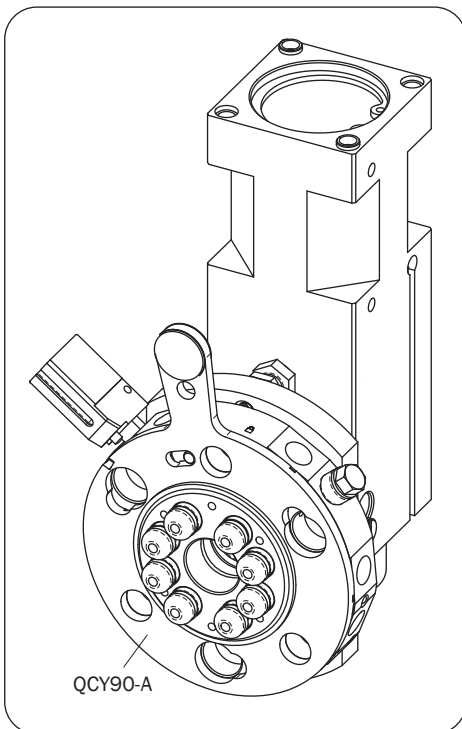
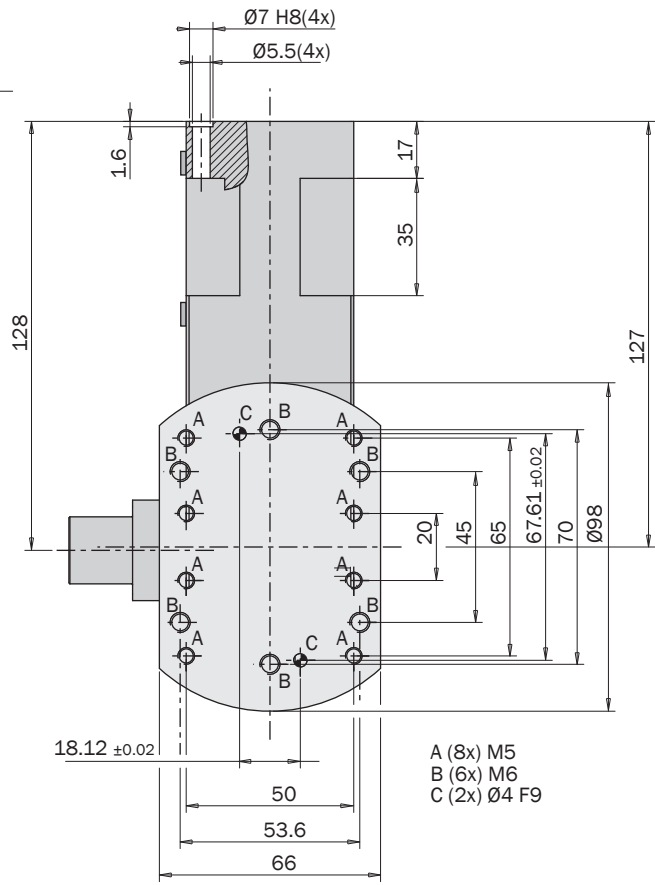
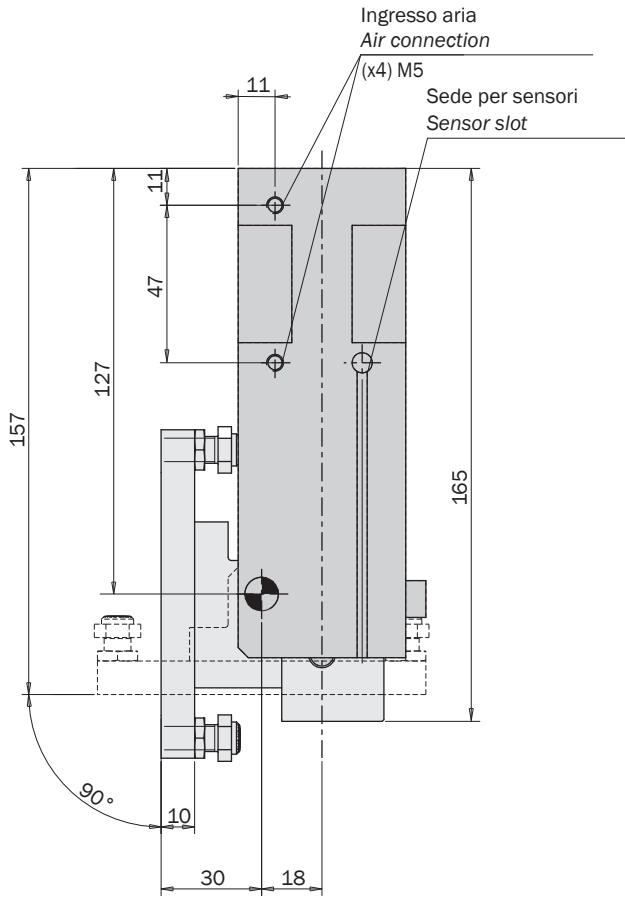
## Pneumatic tilt units for EOATs, series RBT

- 90° rotation (1).
- Two rubber adjustable end-strokes (2).
- High lifting torque.
- Safety lock (3), except RBT30.
- Optional magnetic sensors.



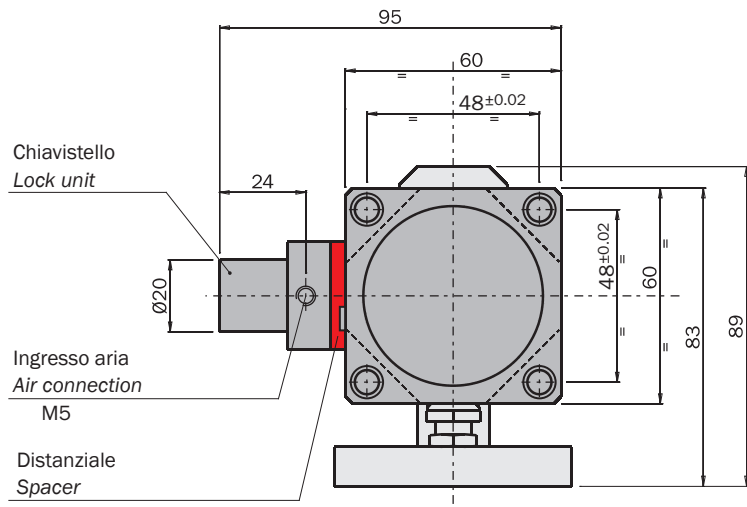
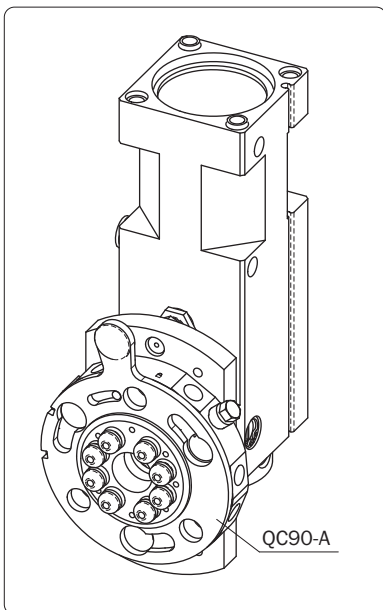
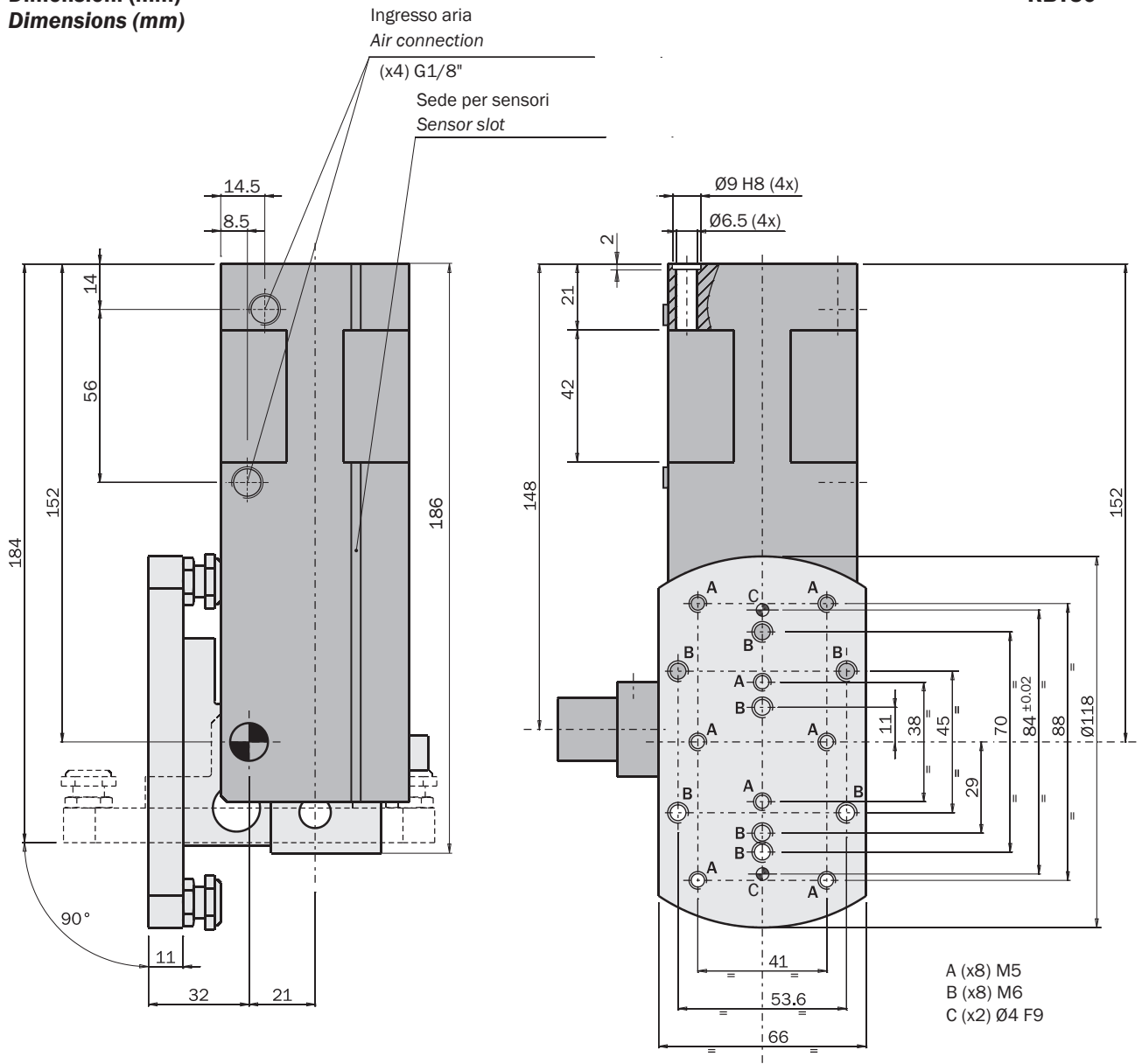
	RBT30	RBT40	RBT50	RBT63	RBT80
Fluido Medium	Aria compressa a norma ISO 8573-1:2010 [7:4:4] Compressed air in compliance with ISO 8573-1:2010 [7:4:4]				
Pressione di esercizio Pressure range	2 ÷ 8 bar				
Pressione per sbloccaggio Unlock pressure	-	> 3.5 bar			
Temperatura di esercizio Temperature range	5 ÷ 60 °C.				
Corsa angolare Tilt angle	90°				
Regolazione fine-corsa End stroke adjustment	± 2°				
Consumo d'aria per ciclo Cycle air consumption	56 cm <sup>3</sup>	142 cm <sup>3</sup>	266 cm <sup>3</sup>	462 cm <sup>3</sup>	983 cm <sup>3</sup>
Coppia di sollevamento a 6 bar (90° → 0°) Lift torque at 6 bar (90° → 0°)	(Mu) > 9 Nm	> 24 Nm	> 45 Nm	> 78 Nm	> 174 Nm
Coppia di abbassamento a 6 bar (0° → 90°) Drop torque at 6 bar (0° → 90°)	(Md) > 4 Nm	> 11 Nm	> 22 Nm	> 42 Nm	> 84 Nm
Carico ammissibile Allowed load	(F) 50 N	100 N	200 N	300 N	600 N
Momento ammissibile Allowed moment	(Mf) 3 Nm	7 Nm	12 Nm	30 Nm	75 Nm
Peso Weight	520 g	1050 g	1600 g	2600 g	6500 g





**Dimensioni (mm)**  
**Dimensions (mm)**

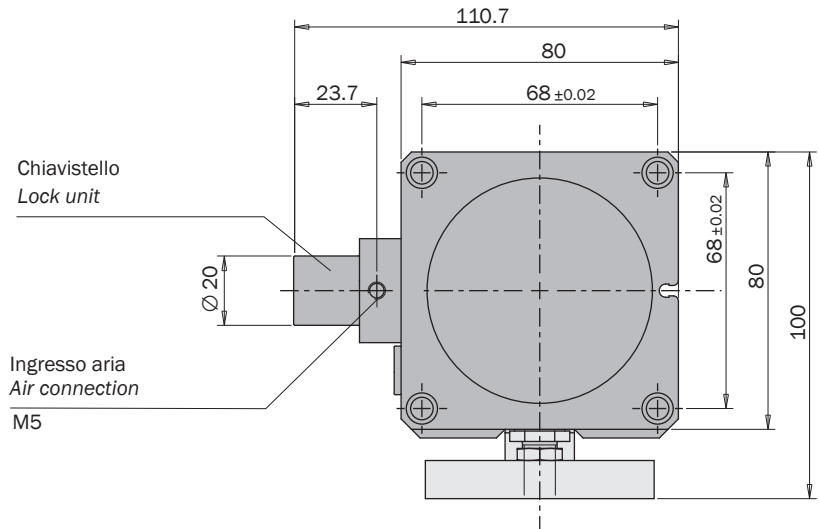
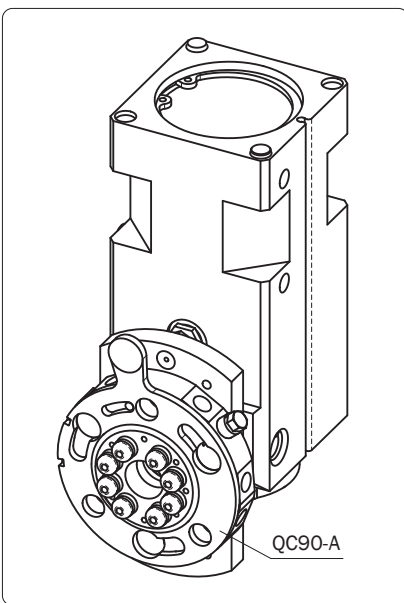
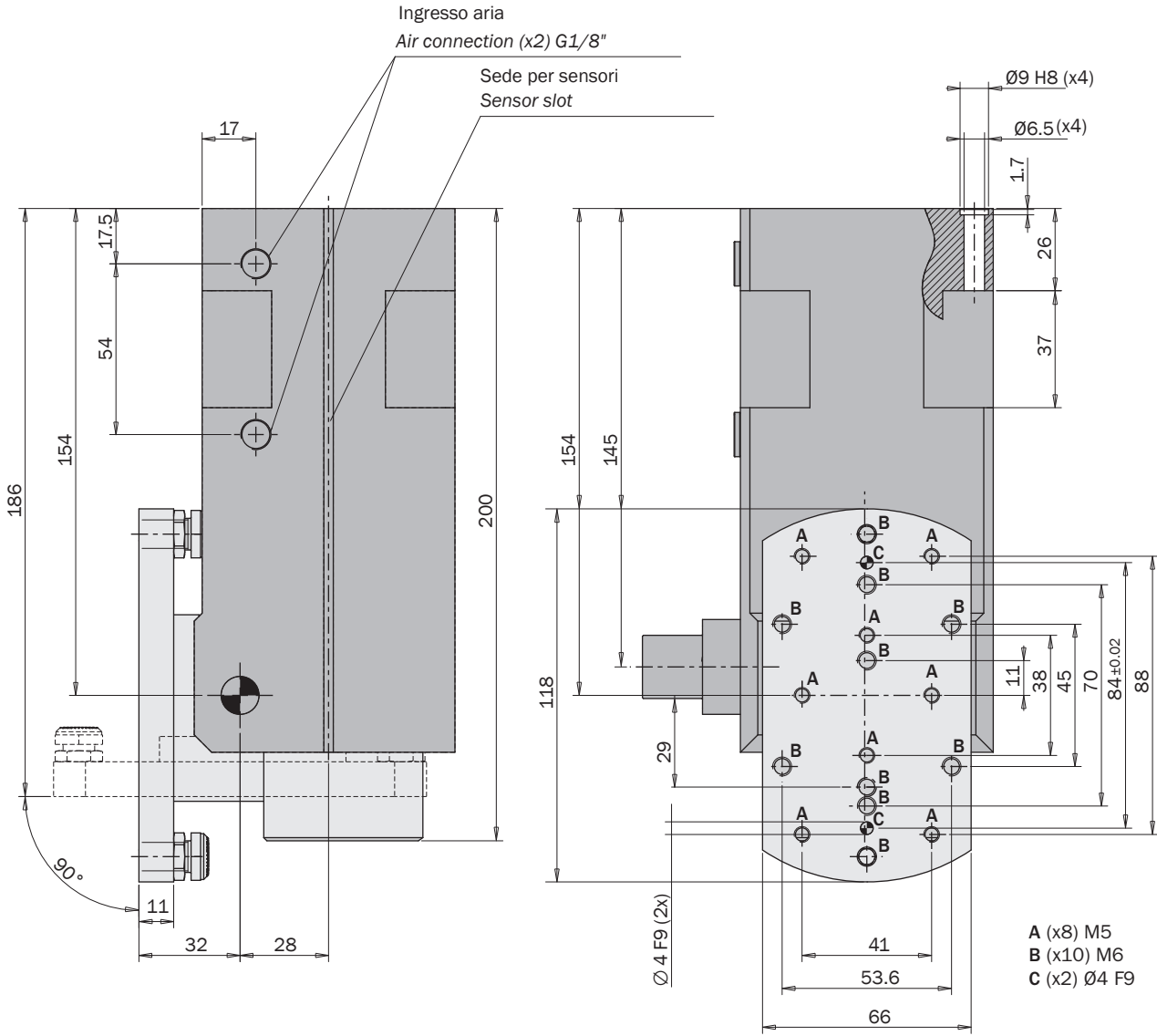
**RBT50**



FIRST ANGLE  
PROJECTION

**Dimensioni (mm)**  
**Dimensions (mm)**

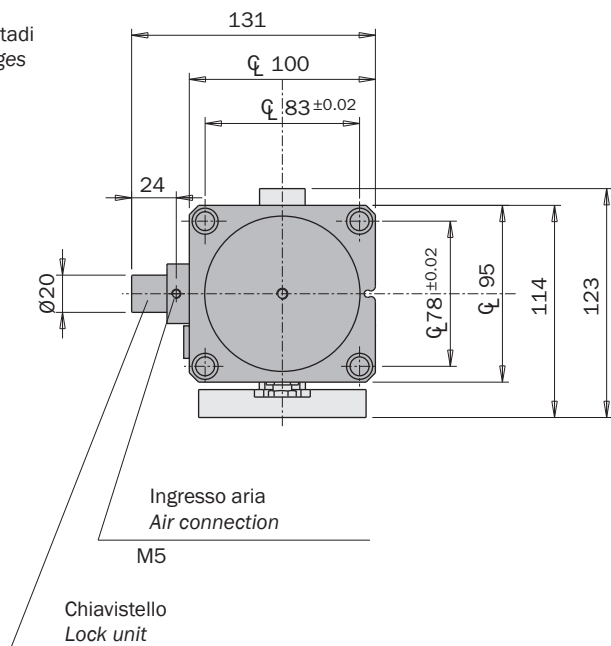
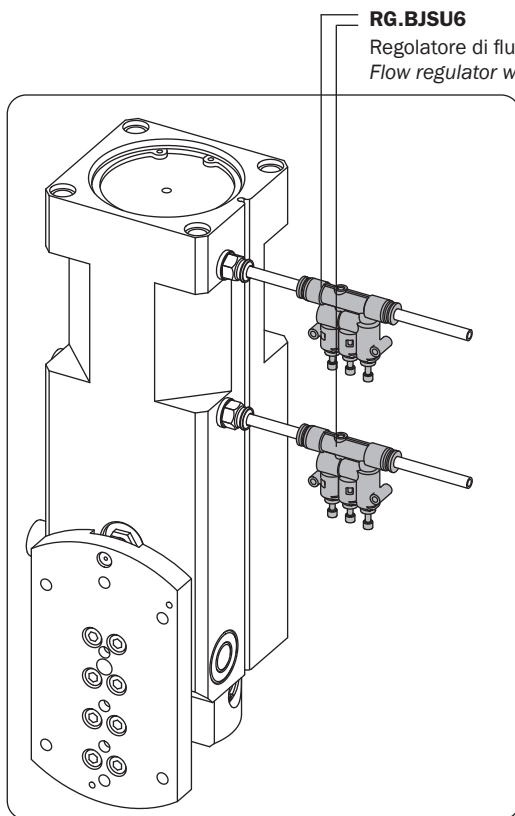
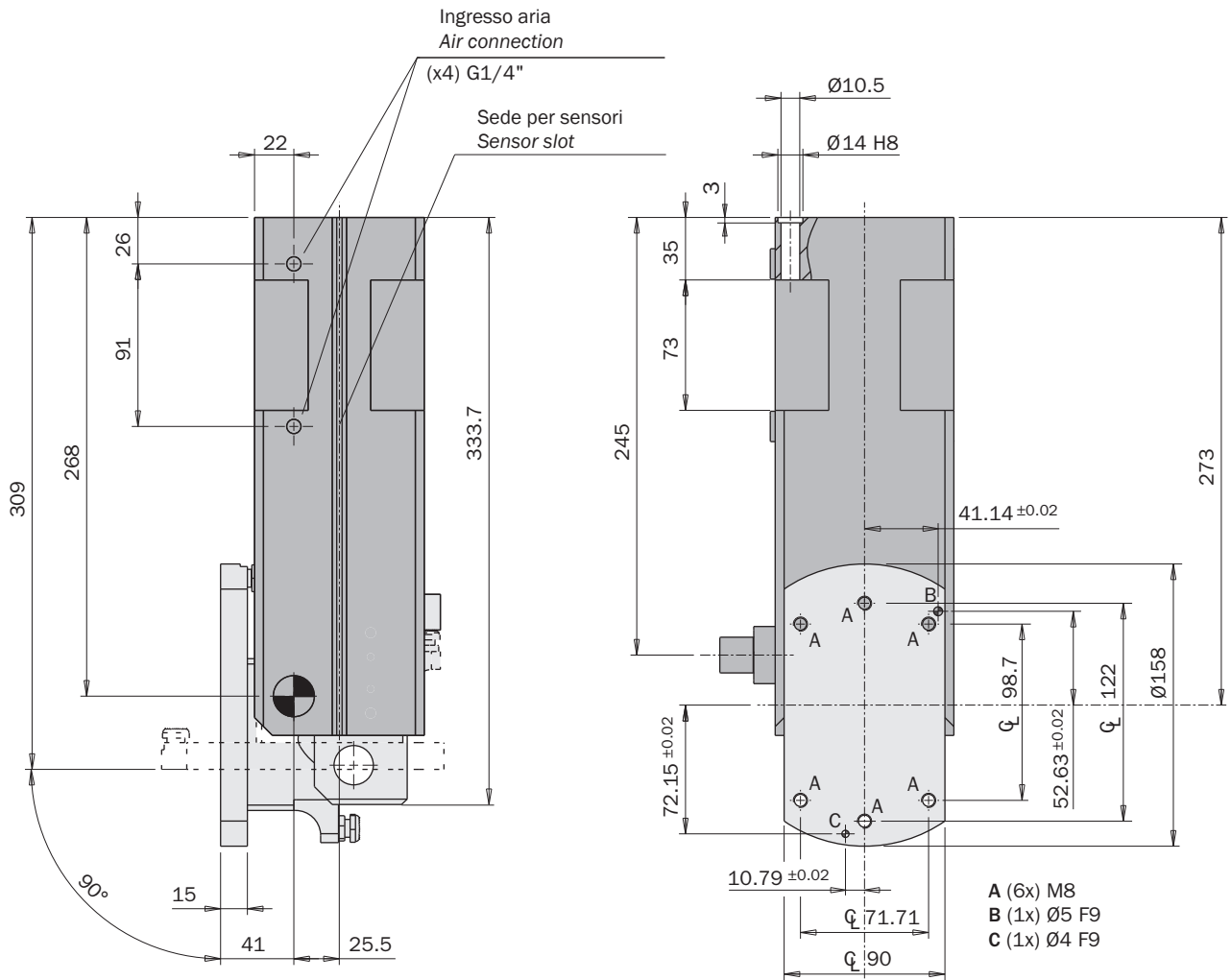
**RBT63**



FIRST ANGLE  
PROJECTION

**Dimensioni (mm)**  
**Dimensions (mm)**

**RBT80**



FIRST ANGLE  
PROJECTION