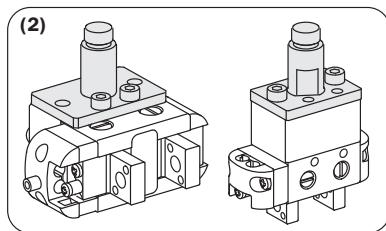
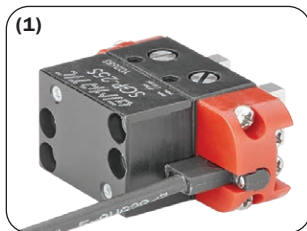


## Pinza pneumatica a 2 griffe ad azione parallela autocentrante (serie SGP-S)

- Azionamento a doppio effetto.
- Meccanismo di regolazione del gioco.
- Prestazioni elevate in dimensioni ridotte.
- Costruzione robusta: grande durata e affidabilità senza manutenzione.
- Diverse possibilità di fissaggio e alimentazione.
- Predisposta per sensore magnetico programmabile (1).
- Grasso alimentare NSF-H1.
- Vari accessori disponibili per il fissaggio (2).
- Disponibile anche con molla in chiusura (-NC) o in apertura (-NO)

## 2-jaw parallel self-centering pneumatic gripper (series SGP-S)

- Double acting.
- Backlash adjusting system.
- High performance in small dimensions.
- The rugged construction lends itself to heavy duty applications for a trouble free long life without maintenance.
- Various fastening and air feeding options.
- Ready for programmable magnetic sensor (1).
- Food grade grease FDA-H1.
- Several mounting accessories (2).
- Spring closed (-NC) or spring open (-NO) option



SGP-16S

SGP-20S

SGP-25S

SGP-32S

SGP-40S

SGP-50S

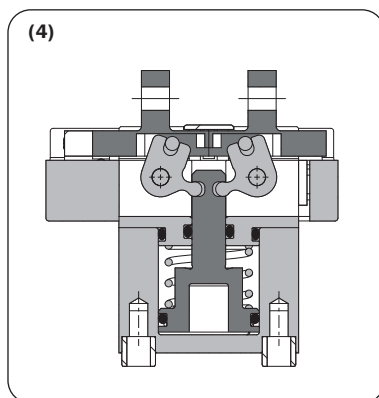
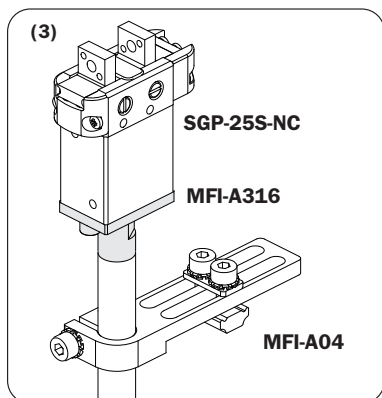
	SGP-16S	SGP-20S	SGP-25S	SGP-32S	SGP-40S	SGP-50S
Fluido Medium	Aria compressa a norma ISO 8573-1:2010 [7:4:4] Compressed air in compliance with ISO 8573-1:2010 [7:4:4]					
Pressione di esercizio Operating pressure range	2.5 ÷ 8 bar		2 ÷ 8 bar			
Temperatura di esercizio Operating temperature range	5° ÷ 60°C.					
Forza di serraggio per griffa in apertura a 6 bar Opening gripping force at 6 bar on each jaw	16 N	23 N	52 N	67 N	80 N	145 N
Forza di serraggio totale in apertura a 6 bar Opening total gripping force at 6 bar	32 N	46 N	104 N	134 N	160 N	290 N
Forza di serraggio per griffa in chiusura a 6 bar Closing gripping force at 6 bar on each jaw	14 N	20 N	47 N	60 N	73 N	126 N
Forza di serraggio totale in chiusura a 6 bar Closing total gripping force at 6 bar	28 N	40 N	94 N	120 N	146 N	252 N
Corsa totale Total stroke (±0.3 mm)	3 mm	4 mm	6 mm	8 mm	12 mm	16 mm
Frequenza max funzionamento continuativo Maximum working frequency	3 Hz	3 Hz	3 Hz	3 Hz	2 Hz	2 Hz
Consumo d'aria per ciclo Cycle air consumption	0.2 cm <sup>3</sup>	0.5 cm <sup>3</sup>	1.4 cm <sup>3</sup>	2.4 cm <sup>3</sup>	4.5 cm <sup>3</sup>	10 cm <sup>3</sup>
Tempo di chiusura senza carico Closing time without load	0.02 s	0.02 s	0.02 s	0.02 s	0.05 s	0.05 s
Ripetibilità Repetition accuracy	0.02 mm	0.02 mm	0.02 mm	0.02 mm	0.02 mm	0.02 mm
Peso Weight	19 g	33 g	43 g	86 g	145 g	250 g

**Versione con molla in chiusura (-NC)**

- Può essere usata a doppio effetto con valvola 5/2 e forza di chiusura aumentata, oppure a semplice effetto con valvola 3/2.
- Il corpo pinza è più lungo per alloggiare una molla adeguata sopra al pistone (4).
- Vari accessori disponibili per il fissaggio (3).

**Spring closed (-NC) version**

- It can be used double-acting with a 5/2 valve and enhanced closing force, or single-acting with a 3/2 valve.
- The gripper body is longer to allow a proper spring over the piston (4).
- Several mounting accessories (3).



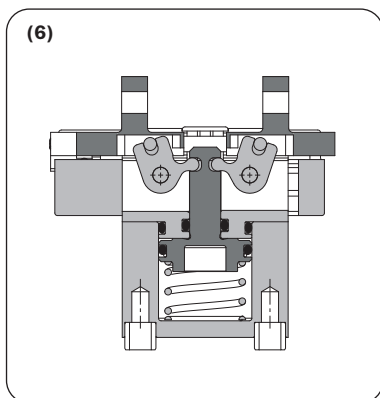
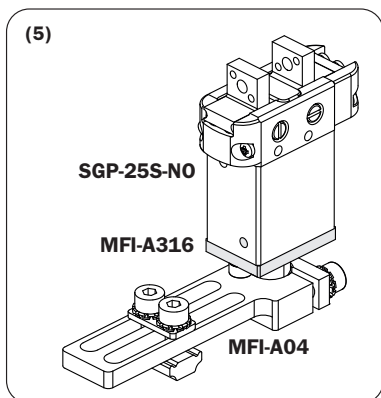
	NEW	NEW	NEW	NEW	NEW	NEW
	SGP-16S-NC	SGP-20S-NC	SGP-25S-NC	SGP-32S-NC	SGP-40S-NC	SGP-50S-NC
Fluido Medium	Aria compressa a norma ISO 8573-1:2010 [7:4:4] Compressed air in compliance with ISO 8573-1:2010 [7:4:4]					
Pressione di esercizio Operating pressure range	4 ÷ 8 bar					
Temperatura di esercizio Operating temperature range	5° ÷ 60°C.					
Forza di serraggio per griffa in apertura a 6 bar Opening gripping force at 6 bar on each jaw	9 N	16 N	35 N	45 N	52 N	98 N
Forza di serraggio totale in apertura a 6 bar Opening total gripping force at 6 bar	18 N	32 N	70 N	90 N	104 N	196 N
Forza di serraggio per griffa in chiusura a 6 bar Closing gripping force at 6 bar on each jaw	21 N	27 N	64 N	82 N	102 N	172 N
Forza di serraggio totale in chiusura a 6 bar Closing total gripping force at 6 bar	42 N	54 N	128 N	164 N	204 N	344 N
Forza di serraggio per griffa in chiusura a 0 bar Clamping force per jaw at 0 bar	7 N	7 N	17 N	22 N	30 N	47 N
Forza di serraggio totale in chiusura a 0 bar Total clamping force at 0 bar (closed position)	14 N	14 N	34 N	44 N	60 N	94 N
Corsa totale Total stroke (±0.3 mm)	3 mm	4 mm	6 mm	8 mm	12 mm	16 mm
Frequenza max funzionamento continuativo Maximum working frequency	3 Hz	3 Hz	3 Hz	3 Hz	2 Hz	2 Hz
Consumo d'aria per ciclo Cycle air consumption	0.5 cm <sup>3</sup>	0.8 cm <sup>3</sup>	2.6 cm <sup>3</sup>	3.7 cm <sup>3</sup>	6.4 cm <sup>3</sup>	14.2 cm <sup>3</sup>
Tempo di chiusura senza carico Closing time without load	0.02 s	0.02 s	0.02 s	0.02 s	0.05 s	0.05 s
Ripetibilità Repetition accuracy	0.02 mm	0.02 mm	0.02 mm	0.02 mm	0.02 mm	0.02 mm
Peso Weight	22 g	36 g	60 g	104 g	172 g	299 g

## Versione con molla in apertura (-NO)

- Può essere usata a doppio effetto con valvola 5/2 e forza di apertura aumentata, oppure a semplice effetto con valvola 3/2.
- Il corpo pinza è più lungo per alloggiare una molla adeguata sotto al pistone (6).
- Vari accessori disponibili per il fissaggio (5).

## Spring open (-NO) version

- It can be used double-acting with a 5/2 valve and enhanced opening force, or single-acting with a 3/2 valve.
- The gripper body is longer to allow a proper spring below the piston (6).
- Several mounting accessories (5).



	NEW	NEW	NEW	NEW	NEW	NEW
	SGP-16S-NO	SGP-20S-NO	SGP-25S-NO	SGP-32S-NO	SGP-40S-NO	SGP-50S-NO
Fluido Medium	Aria compressa a norma ISO 8573-1:2010 [7:4:4] Compressed air in compliance with ISO 8573-1:2010 [7:4:4]					
Pressione di esercizio Operating pressure range	4 ÷ 8 bar					
Temperatura di esercizio Operating temperature range	5° ÷ 60°C.					
Forza di serraggio per griffa in apertura a 6 bar Opening gripping force at 6 bar on each jaw	22 N	30 N	68 N	89 N	108 N	192 N
Forza di serraggio totale in apertura a 6 bar Opening total gripping force at 6 bar	44 N	60 N	136 N	178 N	216 N	384 N
Forza di serraggio per griffa in chiusura a 6 bar Closing gripping force at 6 bar on each jaw	8 N	13 N	31 N	38 N	46 N	79 N
Forza di serraggio totale in chiusura a 6 bar Closing total gripping force at 6 bar	16 N	26 N	62 N	76 N	92 N	158 N
Forza di serraggio per griffa in chiusura a 0 bar Clamping force per jaw at 0 bar	6 N	7 N	16 N	22 N	26 N	47 N
Forza di serraggio totale in chiusura a 0 bar Total clamping force at 0 bar (closed position)	12 N	14 N	32 N	44 N	52 N	94 N
Corsa totale Total stroke (±0.3 mm)	3 mm	4 mm	6 mm	8 mm	12 mm	16 mm
Frequenza max funzionamento continuativo Maximum working frequency	3 Hz	3 Hz	3 Hz	3 Hz	2 Hz	2 Hz
Consumo d'aria per ciclo Cycle air consumption	0.6 cm <sup>3</sup>	0.9 cm <sup>3</sup>	2.9 cm <sup>3</sup>	4.1 cm <sup>3</sup>	6.9 cm <sup>3</sup>	15.4 cm <sup>3</sup>
Tempo di apertura senza carico No-load opening time	0.02 s	0.02 s	0.02 s	0.02 s	0.05 s	0.05 s
Ripetibilità Repetition accuracy	0.02 mm	0.02 mm	0.02 mm	0.02 mm	0.02 mm	0.02 mm
Peso Weight	21 g	35 g	57 g	98 g	171 g	291 g

### Sensori

Le posizioni di funzionamento possono essere verificate grazie ad un sensore programmabile a 3 uscite (non incluso), che rileva la posizione del magnete nella griffa destra.

**I sensori consigliati per le pinze SGP-20S/25S/32S/40S/50S sono:**  
**The recommended sensors for the grippers SGP-20S/25S/32S/40S/50S are:**

PRO-SN4N225HS-G	PNP	Cavo 2.5m
PRO-SN4M225HS-G	NPN	2.5m cable
PRO-SN3N215HS-G	PNP	Connettore M8
PRO-SN3M215HS-G	NPN	M8 snap plug connector

**I sensori opzionali per la pinza SGP-16S sono:**  
**The recommended sensors for the gripper SGP-16S are:**

PRO-SN4N225-G	PNP	Cavo 2.5m
PRO-SN4M225-G	NPN	2.5m cable
PRO-SN3N215-G	PNP	Connettore M8
PRO-SN3M215-G	NPN	M8 snap plug connector

La posizioni rilevate possono essere regolate tramite la procedura di configurazione, in questo modo le 3 uscite digitali possono essere:

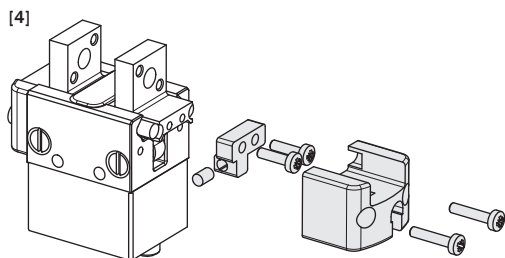
- Uscita 1 – griffe completamente chiuse [1];
- Uscita 2 – griffe in presa dell’oggetto (posizione intermedia) [2];
- Uscita 3 – griffe completamente aperte [3].

### Upgrade

Le vecchie pinze possono essere aggiornate per utilizzare il nuovo sensore programmabile [4].

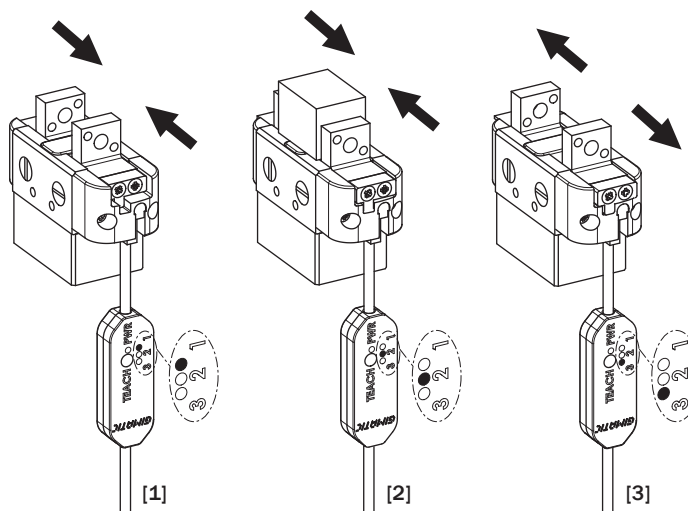
### Downgrade

Le nuove pinze possono essere aggiornate per utilizzare i sensori induttivi [5 e 6].



### Sensors

The operating position can be checked by one 3 - outputs programmable sensor (not included), detecting the position of the magnet on the right jaw.



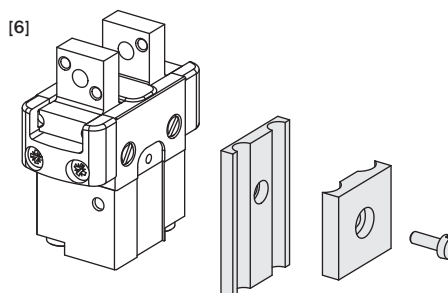
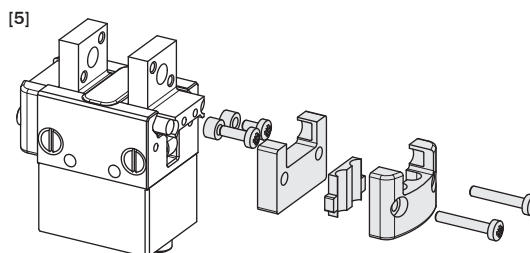
The detected positions can be adjusted by a teaching procedure, so that 3 digital outputs can be:  
 Output 1 - totally closed jaws [1];  
 Output 2 - gripped part (intermediate position) [2];  
 Output 3 - totally open jaws [3].

### Upgrade

Old grippers can be upgraded in order to use the new teachable sensor [4].

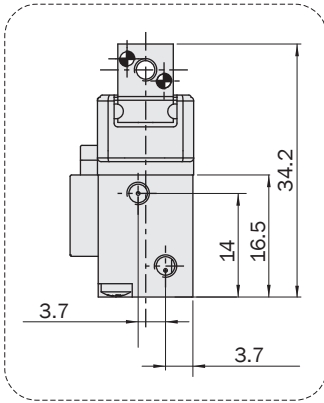
### Downgrade

New grippers can be downgraded in order to use the inductive sensors [5 and 6].

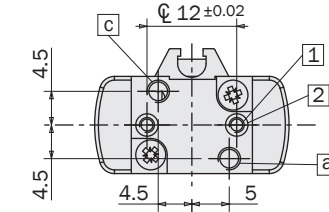
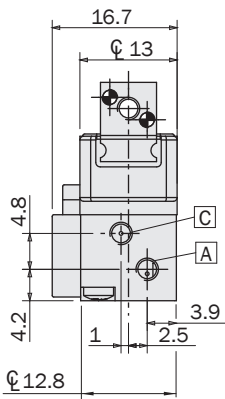


	Upgrade [4]	Downgrade [5]	Downgrade [6]
SGP-16S	-	-	SGP-16S-KD
SGP-20S	SGP-20S-KU	SGP-20S-KD	-
SGP-25S	SGP-25S-KU	SGP-25S-KD	-
SGP-32S	SGP-32S-KU	SGP-32S-KD	-
SGP-40S	SGP-40S-KU	SGP-40S-KD	-
SGP-50S	-	SGP-50S-KD	-

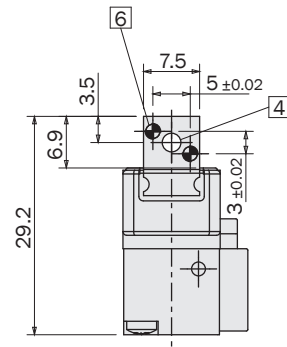
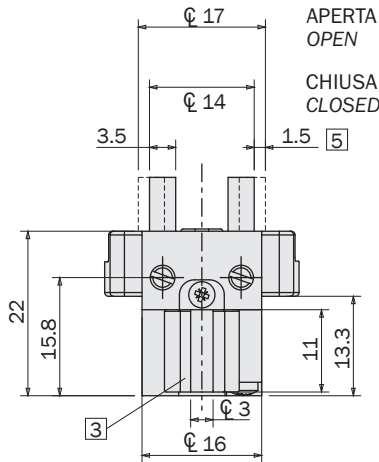
**Dimensioni (mm)**  
**Dimensions (mm)**



SGP-16S...NO/NC

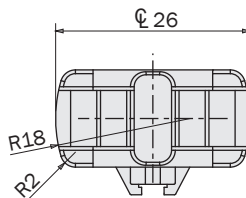
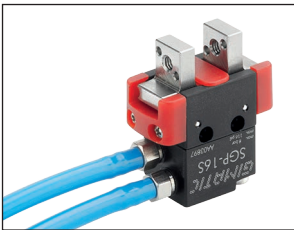


- 1 (N°2) M2x2.8mm  
Foro per fissaggio  
Hole for fastening
- 2 (N°2) Ø3H8x1.2mm  
Sede per boccole di centraggio  
Hole for fastening
- 3 Supporto per posizionamento sensore magnetico PRO-SN/SS  
Magnetic sensor slot (PRO-SN/SS)
- 4 M3  
Foro passante per fissaggio  
Through hole for fastening

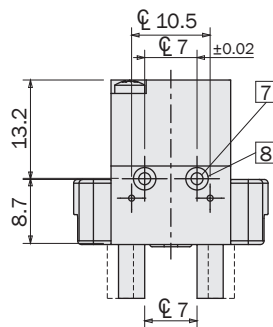


**RG.RO-1376-AS1**

Raccordo M3 diretto  
Straight M3 fitting



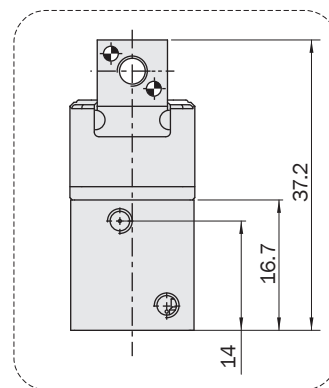
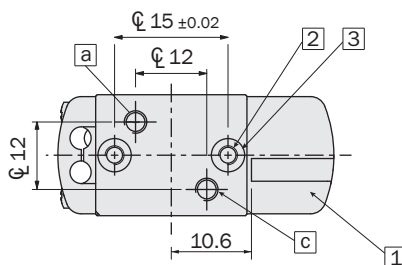
- 5 Corsa per griffa  
Stroke each jaw
- 6 Ø1.5H8x3.5mm  
Foro di riferimento  
Dowel pin hole
- 7 (N°2) M2x1.5mm  
Foro per fissaggio  
Hole for fastening
- 8 (N°2) Ø3H8x1.5mm  
Foro di riferimento  
Hole for fastening



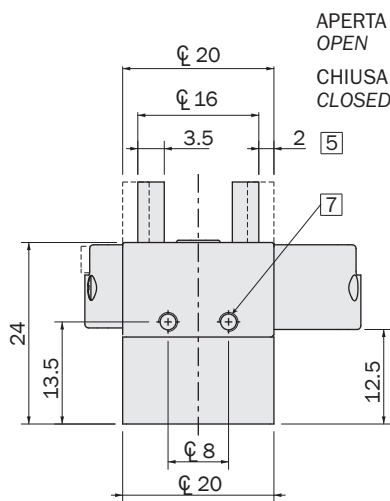
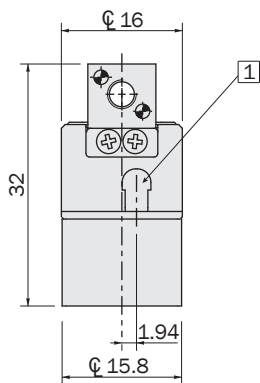
- a M2.5  
Aria compressa in a: apertura della pinza  
Compressed air in a: gripper opening
- A M3  
Aria compressa in A: apertura della pinza  
Compressed air in A: gripper opening
- c M2.5  
Aria compressa in c: chiusura della pinza  
Compressed air in c: gripper closing
- C M3  
Aria compressa in C: chiusura della pinza  
Compressed air in C: gripper closing

**Dimensioni (mm)**  
**Dimensions (mm)**

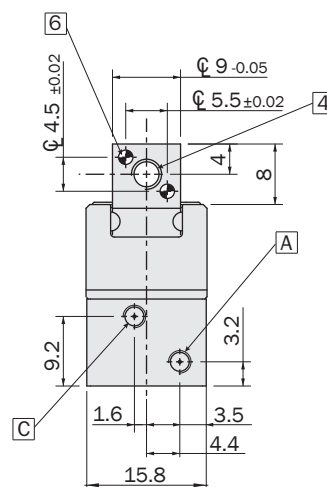
- 1 Foro per sensore programmabile PRO-SN ...HS  
*Hole for programmable sensor PRO-SN ...HS*
- 2 (N°2) M2.5x6mm  
Foro per fissaggio  
*Hole for fastening*
- 3 (N°2) Ø4H8x2mm  
Sede per boccole di centraggio  
*Centering sleeve hole*
- 4 M4  
Foro passante per fissaggio  
*Through hole for fastening*



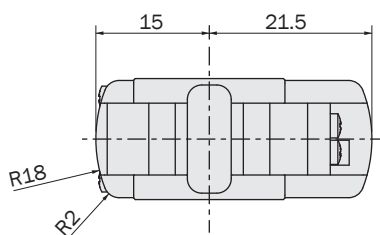
SGP-20S...-NO/NC



APERTA  
OPEN  
CHIUSA  
CLOSED

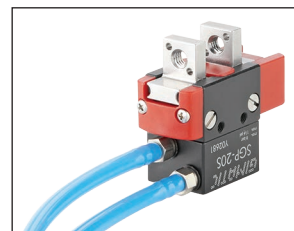


- 5 Corsa per griffa  
*Stroke each jaw*
- 6 Ø1.5H8x3.5mm  
Foro di riferimento  
*Dowel pin hole*
- 7 (N°2) M2.5x4mm  
Foro per fissaggio  
*Hole for fastening*
- 8 Ø1.5H8x3mm  
Foro di riferimento  
*Dowel pin hole*

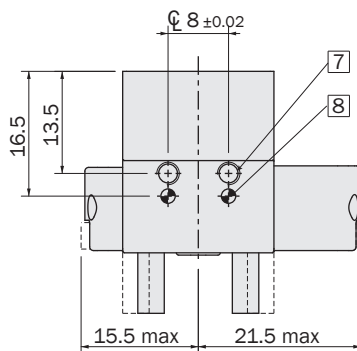


**RG.RO-1376-AS1**

Raccordo M3 diretto  
*Straight M3 fitting*

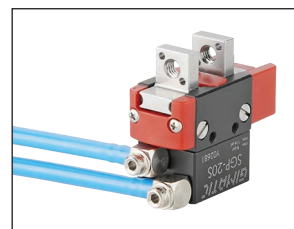


- a M2.5  
Aria compressa in a: apertura della pinza  
*Compressed air in a: gripper opening*
- A M3  
Aria compressa in A: apertura della pinza  
*Compressed air in A: gripper opening*
- c M2.5  
Aria compressa in c: chiusura della pinza  
*Compressed air in c: gripper closing*
- C M3  
Aria compressa in C: chiusura della pinza  
*Compressed air in C: gripper closing*



**RG.RO-1376-AS2**

Raccordo M3 orientabile a "L"  
*Adjustable M3 fitting*



FIRST ANGLE  
PROJECTION

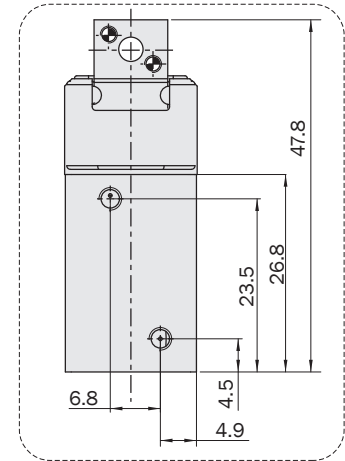
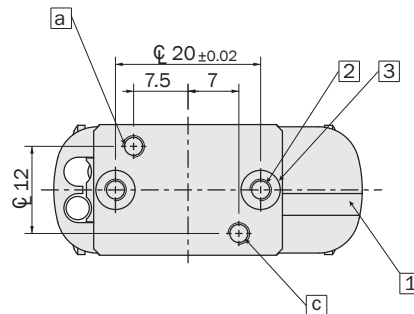
### Dimensioni (mm) Dimensions (mm)

1 Foro per sensore programmabile  
PRO-SN...HS  
Hole for programmable sensor  
PRO-SN...HS

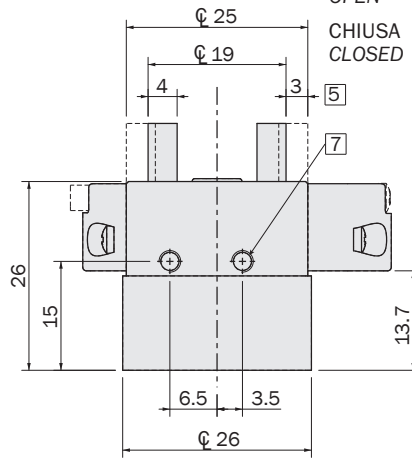
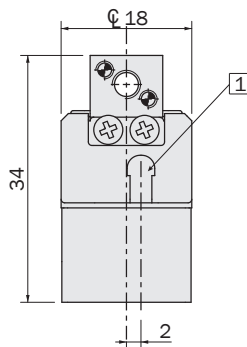
2 (N°2) M3x7mm  
Foro per fissaggio  
Hole for fastening

3 (N°2) Ø5H8x2.4mm  
Sede per boccole di centraggio  
Centering sleeve hole

4 M4  
Foro passante per fissaggio  
Through hole for fastening

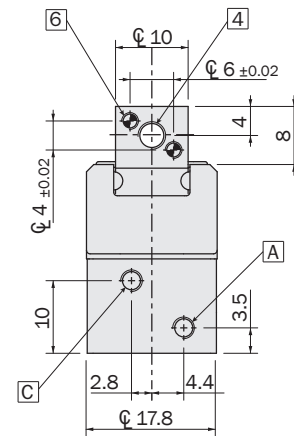


SGP-25S...NO/NC



APERTA  
OPEN

CHIUSA  
CLOSED



5 Corsa per griffa  
Stroke each jaw

6 Ø1.5H8x4mm  
Foro di riferimento  
Dowel pin hole

7 (N°2) M3x5mm  
Foro per fissaggio  
Hole for fastening

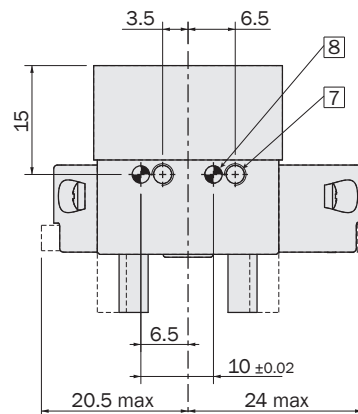
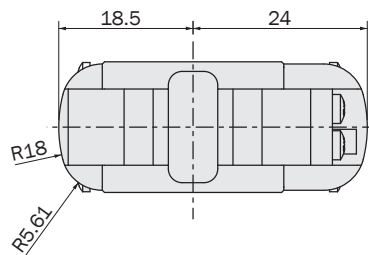
8 Ø2H8x4mm  
Foro di riferimento  
Dowel pin hole

a M3  
Aria compressa in a: apertura della pinza  
Compressed air in a: gripper opening

A M3  
Aria compressa in A: apertura della pinza  
Compressed air in A: gripper opening

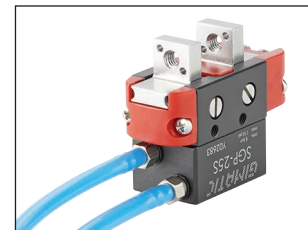
c M3  
Aria compressa in c: chiusura della pinza  
Compressed air in c: gripper closing

C M3  
Aria compressa in C: chiusura della pinza  
Compressed air in C: gripper closing



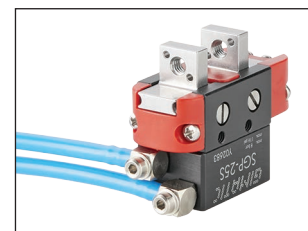
### RG.RO-1376-AS1

Raccordo M3 diretto  
Straight M3 fitting



### RG.RO-1376-AS2

Raccordo M3 orientabile a "L"  
Adjustable M3 fitting



**Dimensioni (mm)**  
**Dimensions (mm)**

1 Foro per sensore programmabile  
PRO-SN...HS  
*Hole for programmable sensor  
PRO-SN...HS*

2 (N°2) M4x7.5mm  
Foro per fissaggio  
*Hole for fastening*

3 (N°2) Ø6H8x2.9mm  
Sede per boccole di centraggio  
*Centering sleeve hole*

4 M5  
Foro passante per fissaggio  
*Through hole for fastening*

5 Corsa per griffa  
*Stroke each jaw*

6 Ø2H8x5mm  
Foro di riferimento  
*Dowel pin hole*

7 (N°2) M3x5mm  
Foro per fissaggio  
*Hole for fastening*

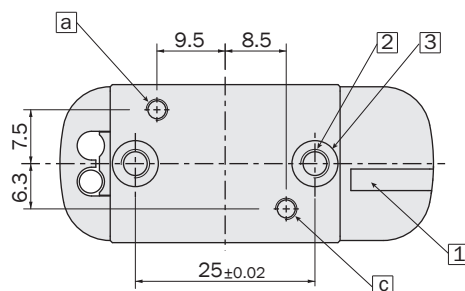
8 Ø2H8x5mm  
Foro di riferimento  
*Dowel pin hole*

a M3  
Aria compressa in a: apertura della pinza  
*Compressed air in a: gripper opening*

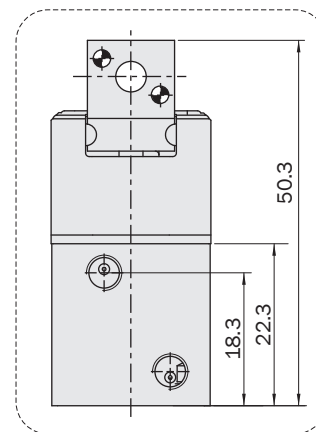
A M5  
Aria compressa in A: apertura della pinza  
*Compressed air in A: gripper opening*

c M3  
Aria compressa in c: chiusura della pinza  
*Compressed air in c: gripper closing*

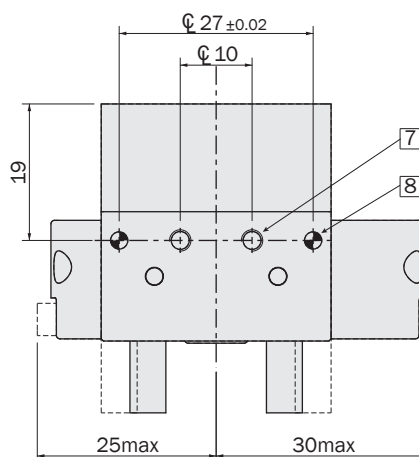
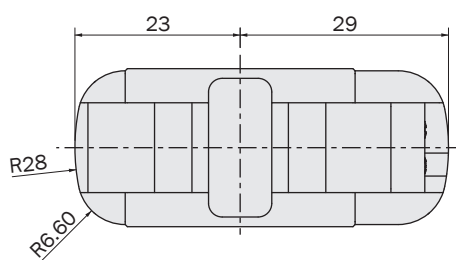
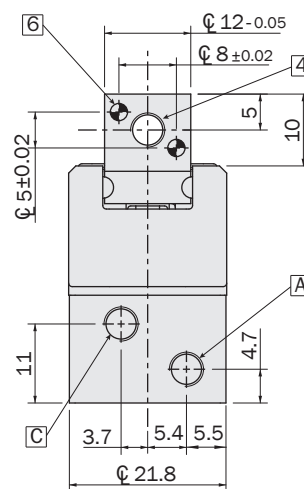
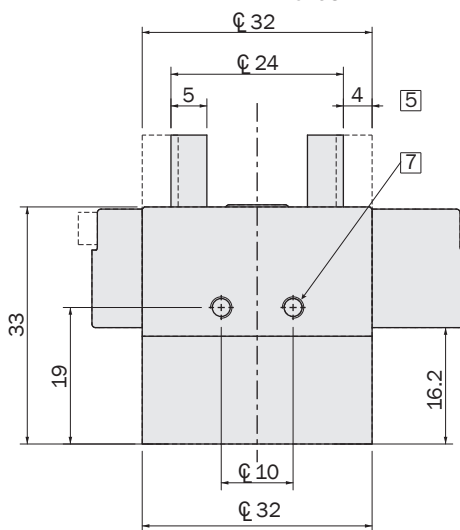
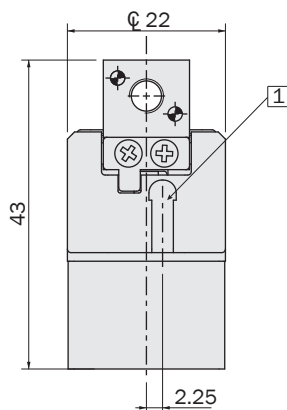
C M5  
Aria compressa in C: chiusura della pinza  
*Compressed air in C: gripper closing*



APERTA  
OPEN  
CHIUSA  
CLOSED



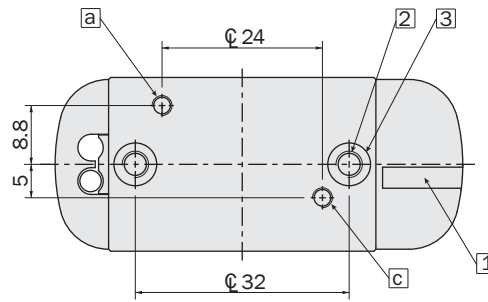
SGP-32S...NO/NC



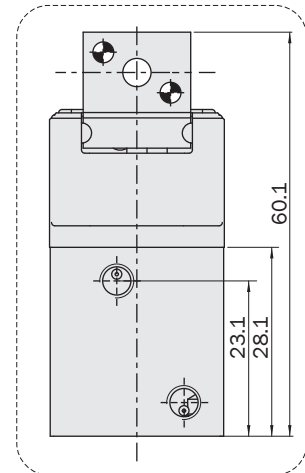
FIRST ANGLE  
PROJECTION

### Dimensioni (mm) Dimensions (mm)

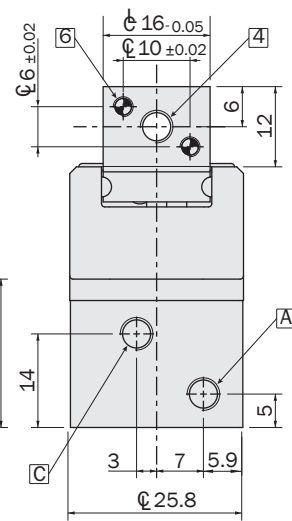
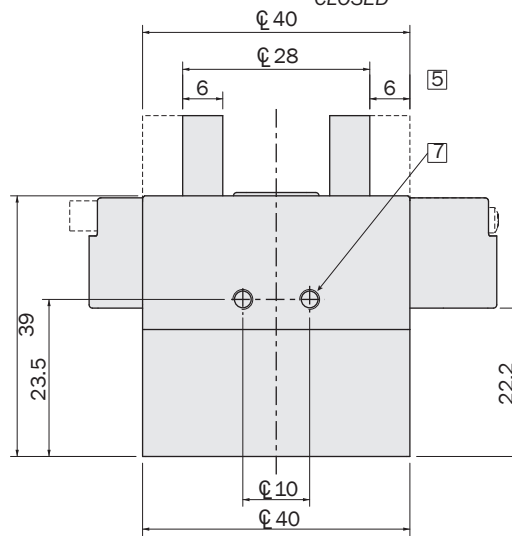
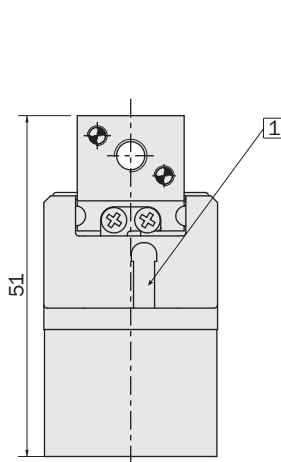
- 1** Foro per sensore programmabile  
PRO-SN...HS  
*Hole for programmable sensor  
PRO-SN...HS*
- 2** (N°2) M4x9.5mm  
Foro per fissaggio  
*Hole for fastening*
- 3** (N°2) Ø6H8x2.9mm  
Sede per boccole di centraggio  
*Centering sleeve hole*
- 4** M5  
Foro passante per fissaggio  
*Through hole for fastening*



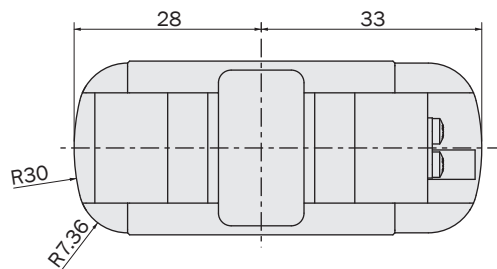
APERTA  
OPEN  
CHIUSA  
CLOSED



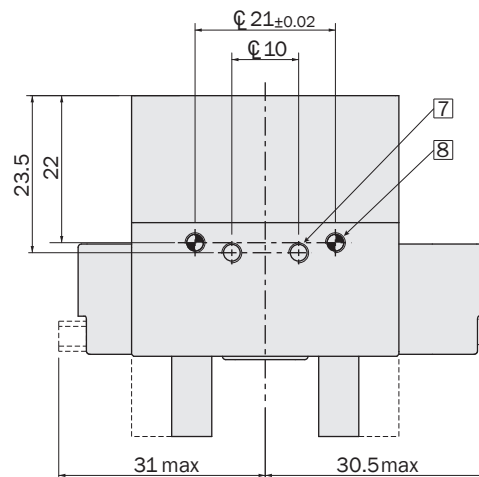
SGP-40S...NO/NC



- 5** Corsa per griffa  
*Stroke each jaw*
- 6** Ø2.5H8x6mm  
Foro di riferimento  
*Dowel pin hole*
- 7** (N°2) M3x5mm  
Foro per fissaggio  
*Hole for fastening*
- 8** Ø2.5H8x6mm  
Foro di riferimento  
*Dowel pin hole*



- a** M3  
Aria compressa in a: apertura della pinza  
*Compressed air in a: gripper opening*
- A** M5  
Aria compressa in A: apertura della pinza  
*Compressed air in A: gripper opening*
- c** M3  
Aria compressa in c: chiusura della pinza  
*Compressed air in c: gripper closing*
- C** M5  
Aria compressa in C: chiusura della pinza  
*Compressed air in C: gripper closing*



FIRST ANGLE  
PROJECTION

**Dimensioni (mm)**  
**Dimensions (mm)**

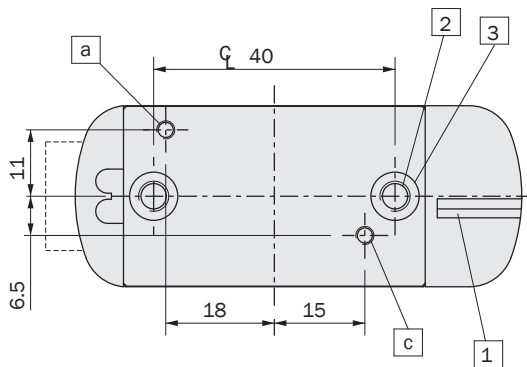
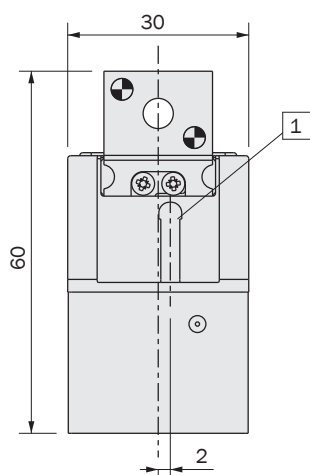
1 Foro per sensore programmabile  
PRO-SN...HS  
*Hole for programmable sensor  
PRO-SN...HS*

2 (N°2) M5x5.9mm  
Foro per fissaggio  
*Hole for fastening*

3 (N°2) Ø8H8x2.9mm  
Sede per boccole di centraggio  
*Centering sleeve hole*

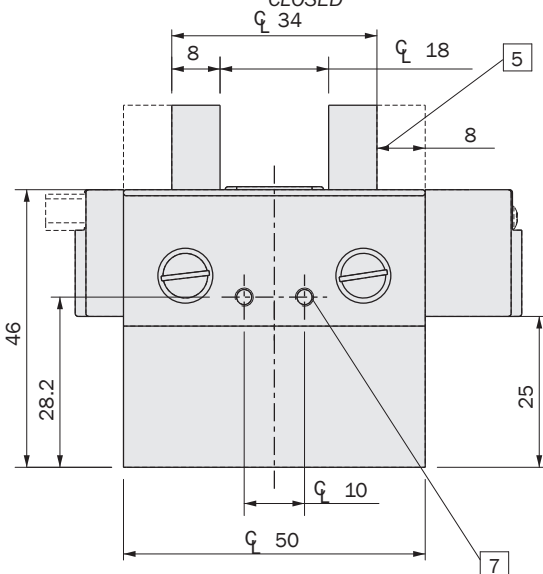
4 M6  
Foro passante per fissaggio  
Corsa per griffa  
*Through hole for fastening  
Stroke for gripper*

5 Stroke each jaw

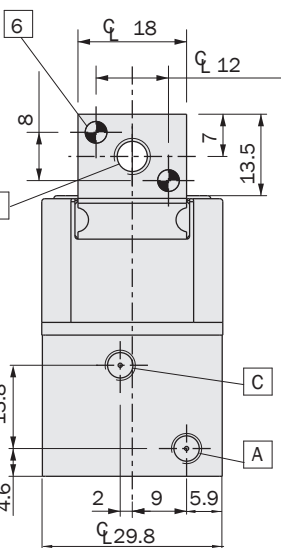


APERTA  
OPEN

CHIUSA  
CLOSED



SGP-50S...-NO/NC



6 Ø3H8x8mm  
Foro di riferimento  
*Dowel pin hole*

7 (N°2) M5x5.5mm  
Foro per fissaggio  
*Hole for fastening*

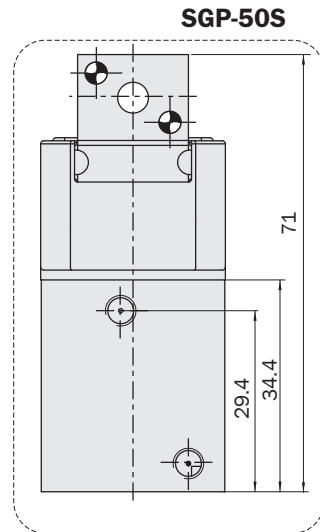
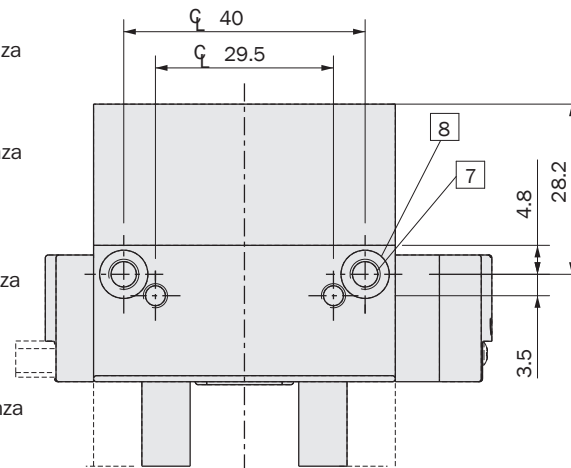
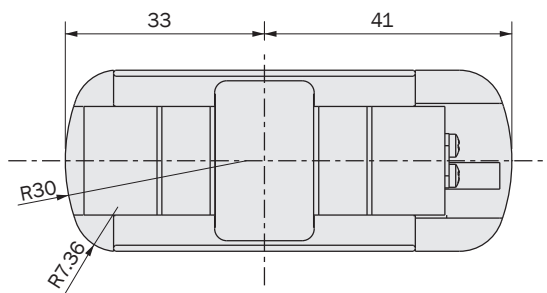
8 Ø8H8x2.5mm  
Sede per boccole di centraggio  
*Centering sleeve hole*

a M3  
Aria compressa in a: apertura della pinza  
*Compressed air in a: gripper opening*

A M5  
Aria compressa in A: apertura della pinza  
*Compressed air in A: gripper opening*

c M3  
Aria compressa in c: chiusura della pinza  
*Compressed air in c: gripper closing*

C M5  
Aria compressa in C: chiusura della pinza  
*Compressed air in C: gripper closing*



Unità Rotanti  
Rotary Units

Cambia Utensile  
Quick Changer

Profili e Staffe  
Profiles and Brackets

Pinze  
Grippers

Attuatori Lineari  
Linear Actuators

Sospensioni  
Suspensions

Taglierini  
Nippers

Kit-Robot  
Robot Kit

Accessori Opzionali  
Options

Sensori  
Sensors