

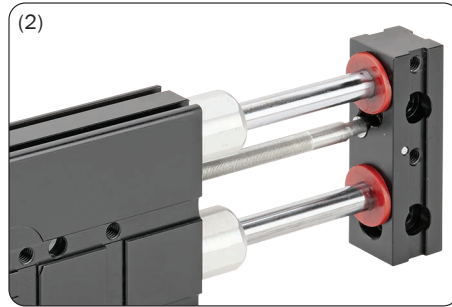
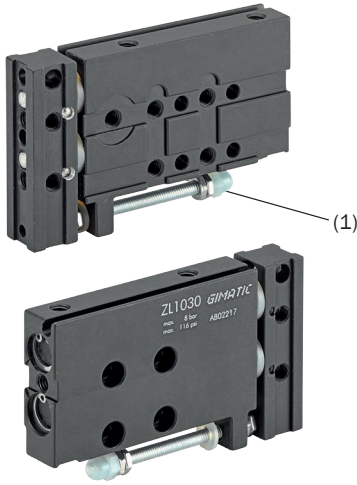
Slitte pneumatiche (serie ZL)

- Disegnate per gli EOAT.
- Azionamento a doppio effetto.
- Profilo piatto.
- Regolazione della corsa di apertura (1).
- Ammortizzatori in poliuretano (2).
- Sensori magnetici opzionali (3).

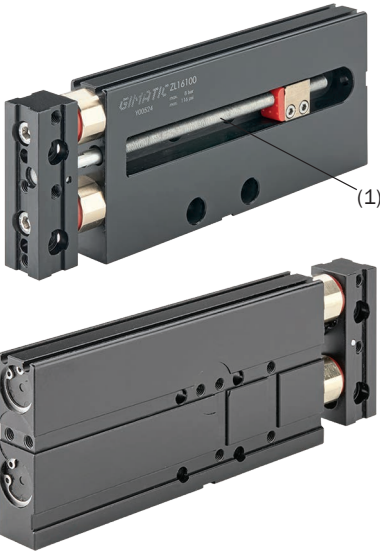
Pneumatic slides (series ZL)

- Designed for EOATs.
- Double-acting.
- Flat profile.
- Opening stroke adjustment (1).
- Polyurethane shock-absorbers (2).
- Optional magnetic sensors (3).

ZL1030



**ZL16...
ZL25...**



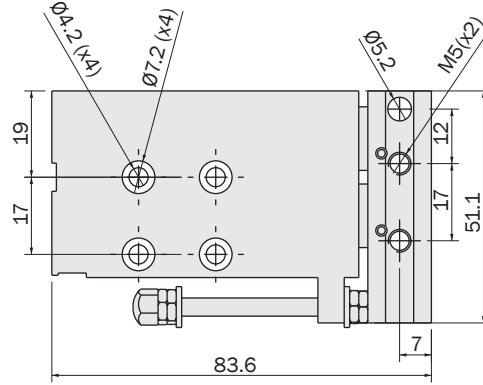
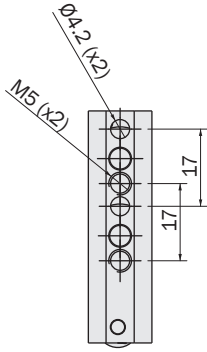
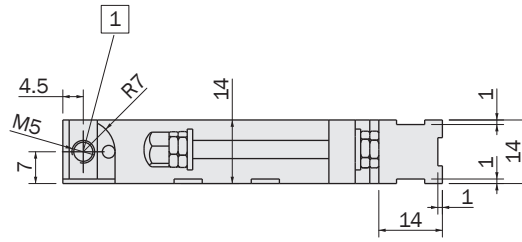
SS4N225-G	PNP	Cavo 2.5m
SS4M225-G	NPN	2.5m cable
SS3N203-G	PNP	Connettore M8
SS3M203-G	NPN	M8 snap plug connector

	ZL1030	ZL1650	ZL16100	ZL2550	ZL25100
Fluido Medium	Aria compressa a norma ISO 8573-1:2010 [7:4:4] Compressed air in compliance with ISO 8573-1:2010 [7:4:4]				
Pressione di esercizio Pressure range	2 ÷ 8 bar				
Temperatura di esercizio Temperature range	5 ÷ 60 °C				
Forza di chiusura a 6 bar Retraction force at 6 bar	60 N	150 N		380 N	
Forza di apertura a 6 bar Extension force at 6 bar	80 N	200 N		500 N	
Corsa Stroke (±0.3 mm)	0 ÷ 30 mm	0 ÷ 50 mm	0 ÷ 100 mm	0 ÷ 50 mm	0 ÷ 100 mm
Consumo d'aria per ciclo Cycle air consumption	9 cm ³	37 cm ³	70 cm ³	90 cm ³	177 cm ³
Tempo di azionamento minimo Minium actuating time	0.06 s	0.13 s	0.24 s	0.24 s	0.45 s
Frequenza massima di lavoro Maximum working frequency	1 Hz				
Peso Weight	0.13 kg	0.41 kg	0.58 kg	0.88 kg	1.16 kg

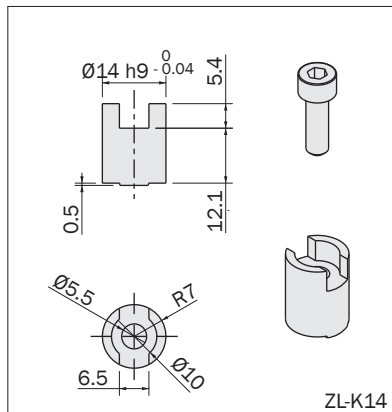
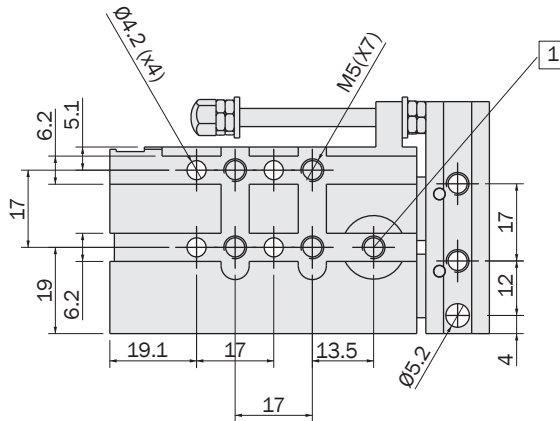
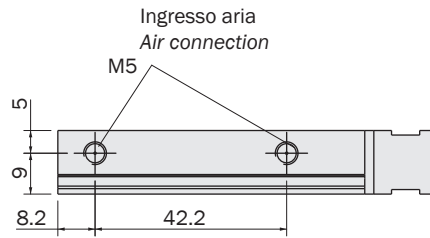
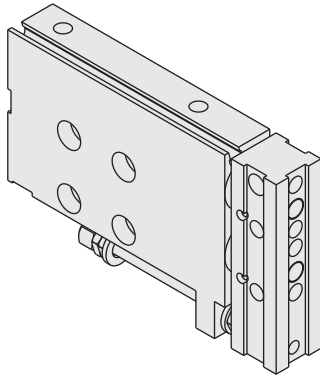
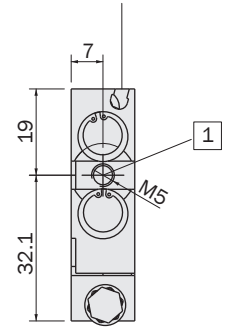
Unità Rotanti Rotary Units
Cambia Utensile Quick Changer
Profili e Staffe Profiles and Brackets
Pinze Grippers
Attuatori Lineari Linear Actuators
Suspensioni Suspensions
Taglierini Nippers
Kit-Robot Robot Kit
Accessori Opzionali Options
Sensori Sensors

Dimensioni (mm)
Dimensions (mm)

1 Posizione di montaggio per ZL-K14
Mounting position for ZL-K14



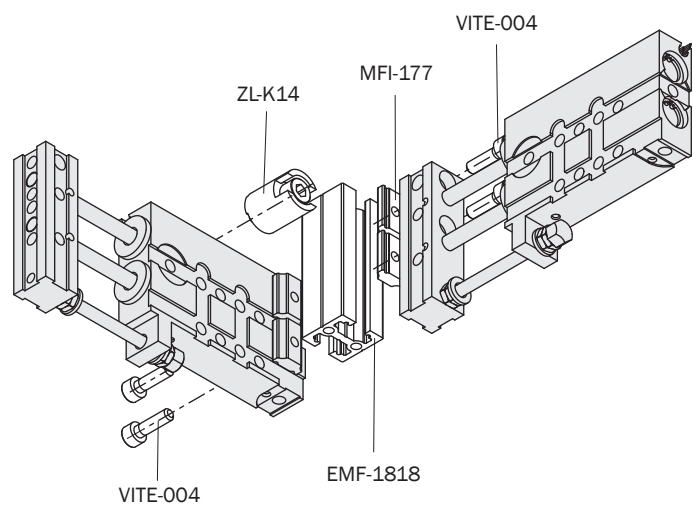
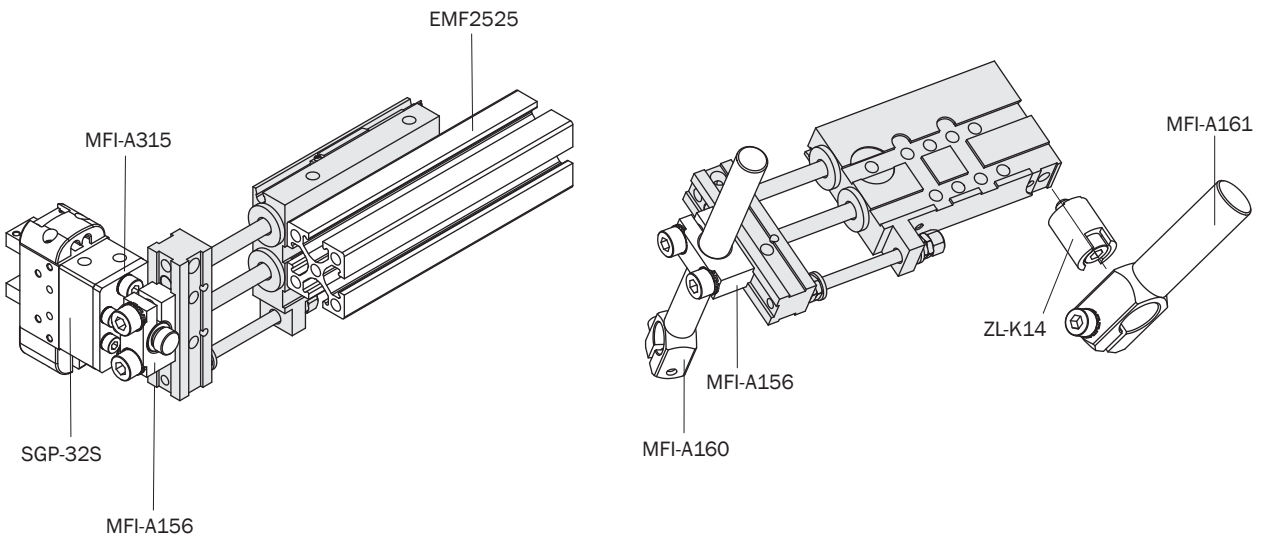
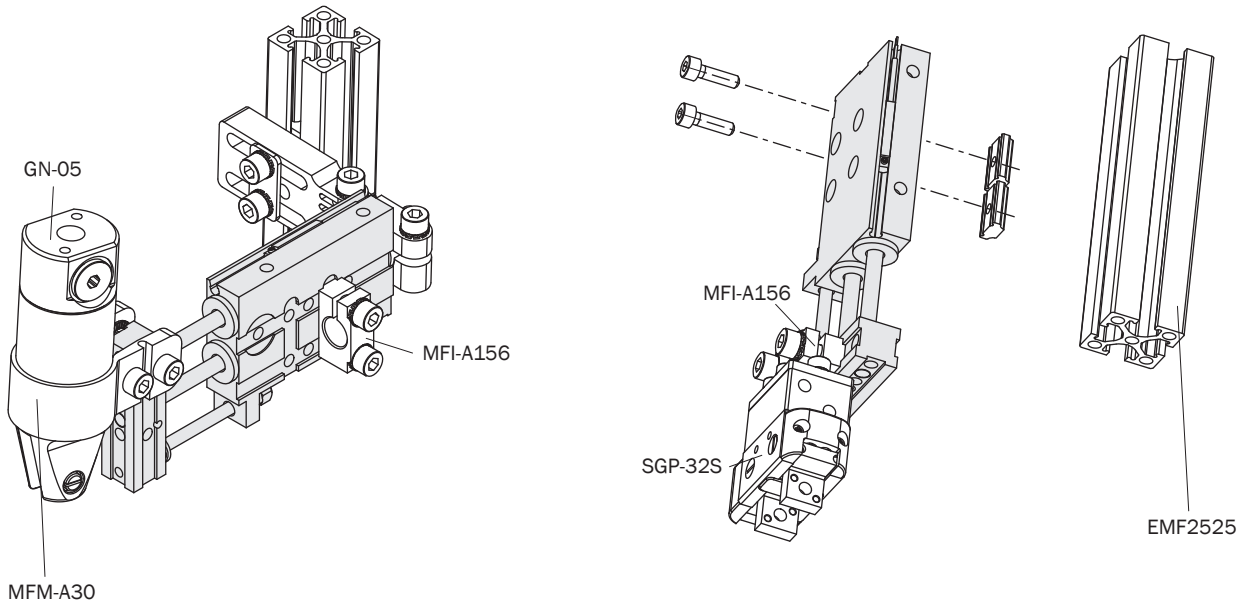
Cava per sensore serie SS
Slot for SS sensor



FIRST ANGLE PROJECTION

Esempio di utilizzo
Application example

ZL 10



Unità Rotanti
Rotary Units

Cambia Utensile
Quick Changer

Profili e Staffe
Profiles and Brackets

Pinze
Grippers

Attuatori Lineari
Linear Actuators

Sospensioni
Suspensions

Taglierini
Nippers

Kit-Robot
Robot Kit

Accessori Opzionali
Options

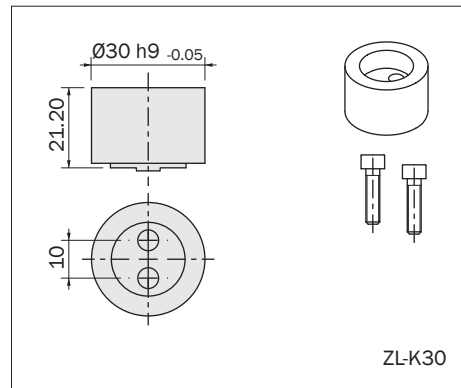
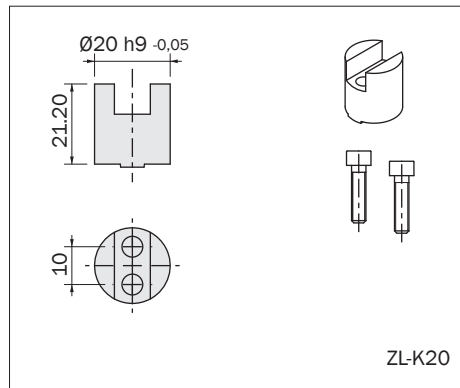
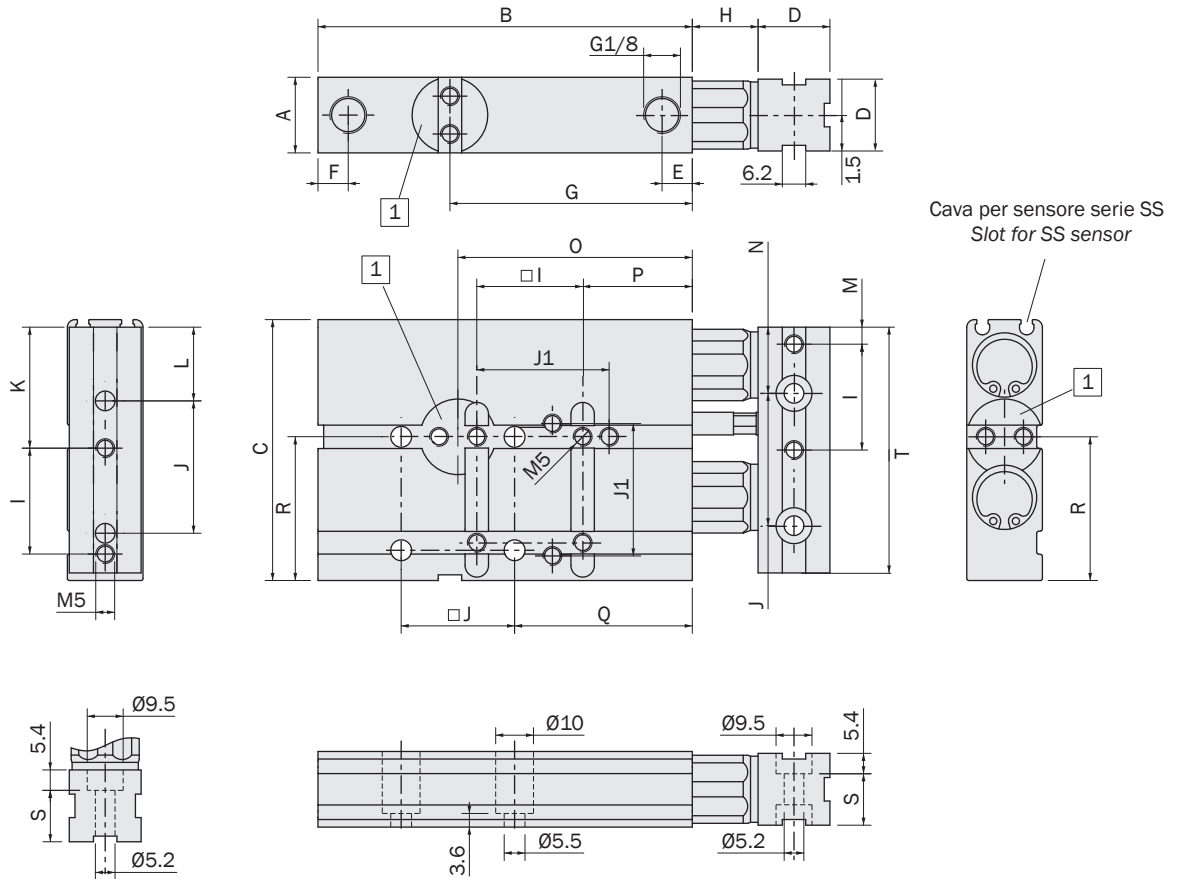
Sensori
Sensors

Dimensioni (mm)
Dimensions (mm)

ZL16
ZL25

	A	B	C	D	E	F	G	H	I	J	J1	K	L	M	N	O	P	Q	R	S	T
ZL1650	20	99	69	19	8	8	64.1	17.4	28	30	35	32	19.5	4.5	17.5	62	29	47	38	13.6	65
ZL16100	20	149	69	19	8	8	64.1	17.4	28	30	35	32	19.5	4.5	17.5	62	29	47	38	13.6	65
ZL2550	30	101	87	29	8.5	9.5	64.1	17.4	40	40	-	24.5	31.5	7	22	62	17	37	47	23.6	78
ZL25100	30	151	87	29	8.5	9.5	64.1	17.4	40	40	-	24.5	31.5	7	22	62	17	37	47	23.6	78

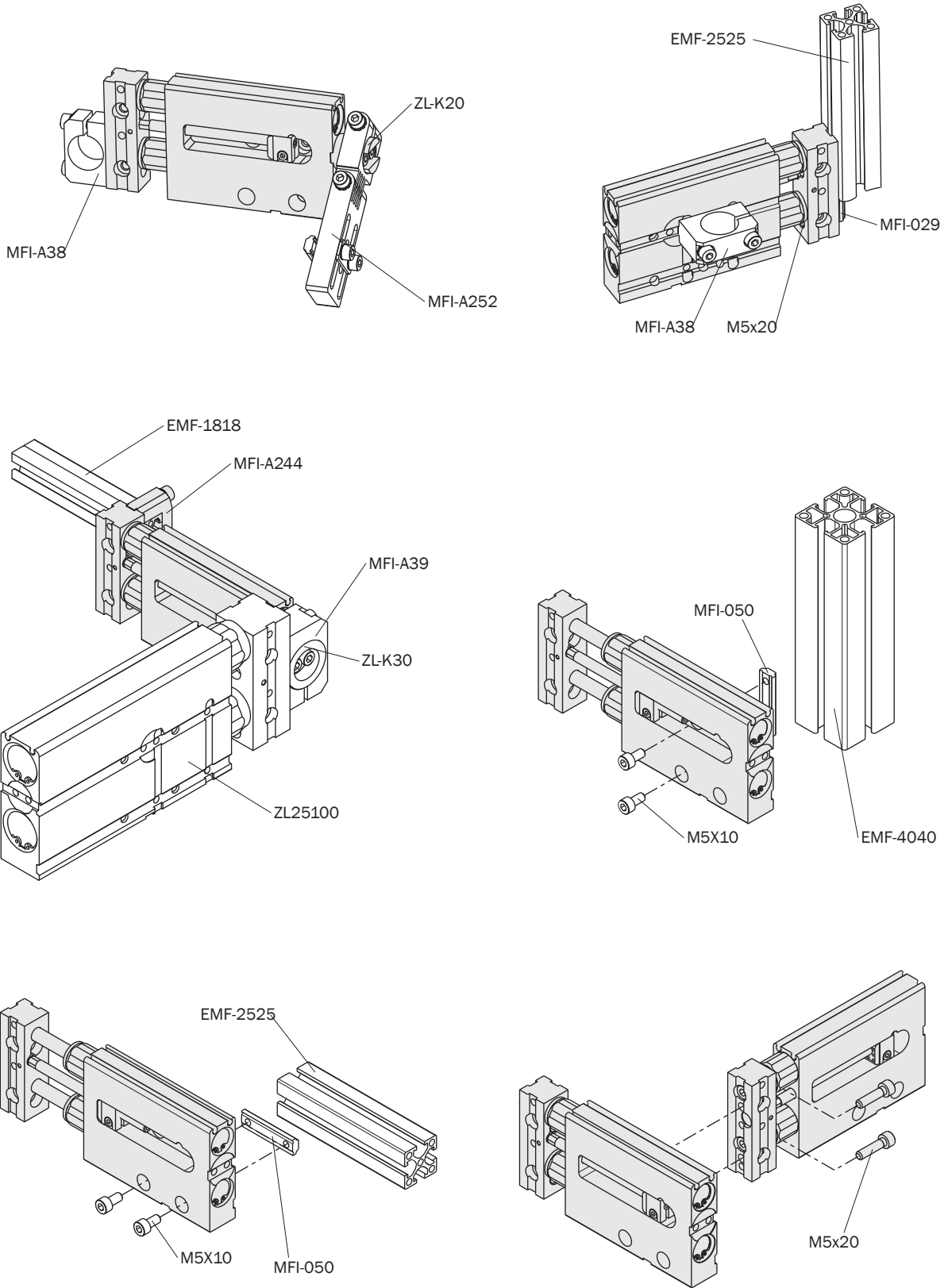
1 Posizione di montaggio per ZL-K20 e ZL-K30
Mounting position for ZL-K20 e ZL-K30



FIRST ANGLE PROJECTION

Esempio di utilizzo
Application example

ZL 16



Unità Rotanti
Rotary Units

Cambia Utensile
Quick Changer

Profili e Staffe
Profiles and Brackets

Pinze
Grippers

Attuatori Lineari
Linear Actuators

Sospensioni
Suspensions

Taglierini
Nippers

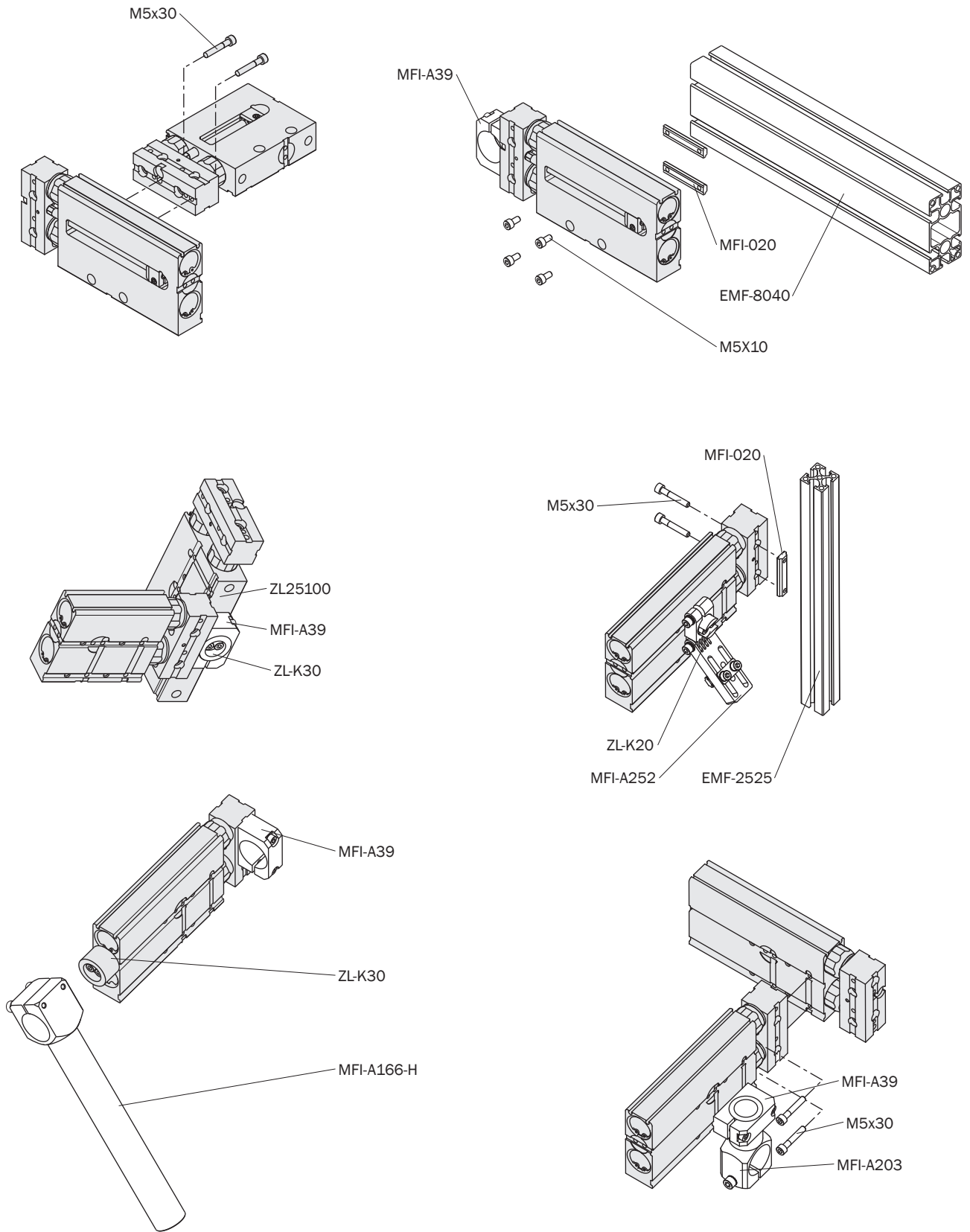
Kit-Robot
Robot Kit

Accessori Opzionali
Options

Sensori
Sensors

Esempio di utilizzo
Application example

ZL 25



Unità Rotanti
Rotary Units

Cambia Utensile
Quick Changer

Profili e Staffe
Profiles and Brackets

Pinze
Grippers

Attuatori Lineari
Linear Actuators

Sospensioni
Suspensions

Taglierini
Nippers

Kit-Robot
Robot Kit

Accessori Opzionali
Options

Sensori
Sensors